

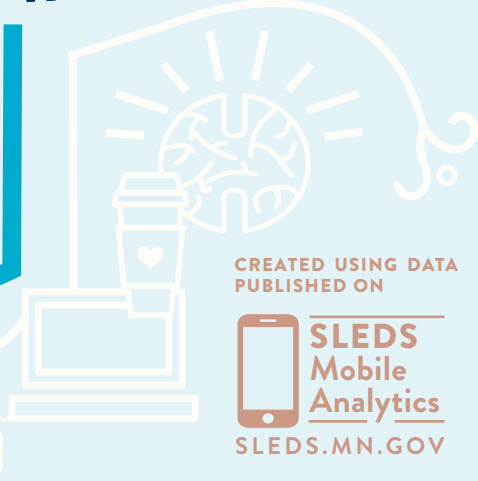
The MINNESOTA

# Getting PREPARED

2017

INFOGRAPHIC

RECENT  
HIGH  
SCHOOL  
GRADUATES  
AND  
DEVELOPMENTAL  
COURSES



CREATED USING DATA  
PUBLISHED ON

SLEDS  
Mobile  
Analytics  
SLEDS.MN.GOV

PUBLISHED BY:

**m** OFFICE OF  
HIGHER EDUCATION

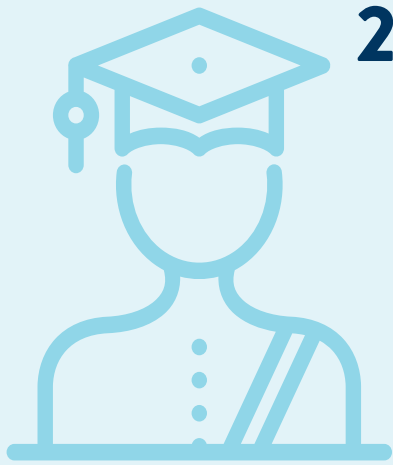
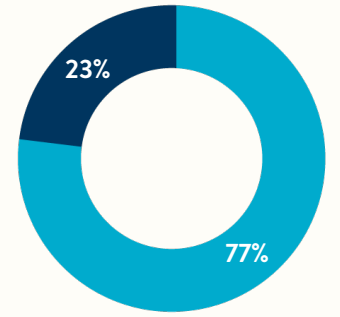
OHE.STATE.MN.US



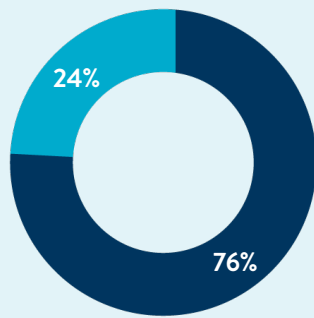
All information is from the Minnesota public high school class of 2014. College enrollment and developmental education activity are within two years of graduation. The term “college” is used to reference any type of postsecondary institution, including both academic and vocational training.

# 77% OF HIGH SCHOOL GRADUATES GO TO COLLEGE

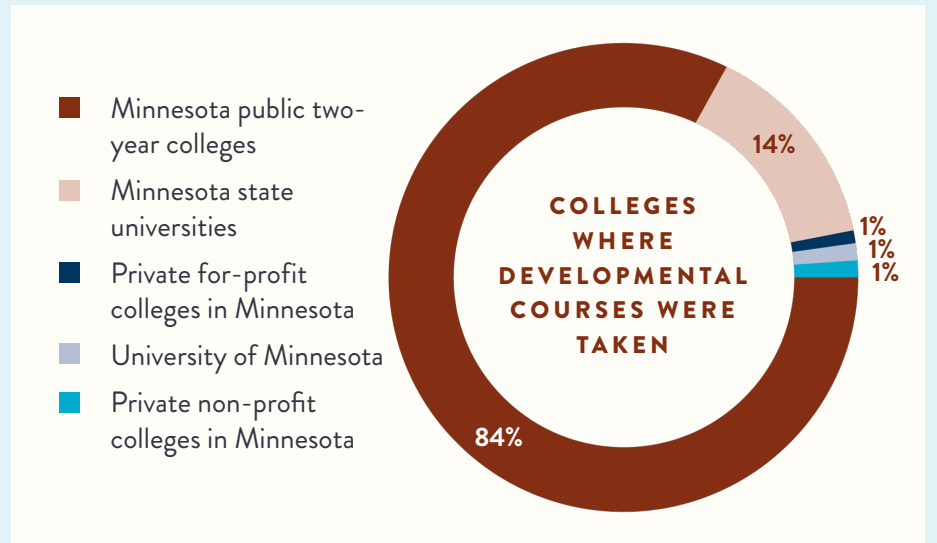
Minnesota does well in moving students from high school to college. However gaps in enrollment exist for key groups of students, including students of color and lower income students.



## 24% OF HIGH SCHOOL GRADUATES ENROLLED IN ONE OR MORE COLLEGE DEVELOPMENTAL COURSES



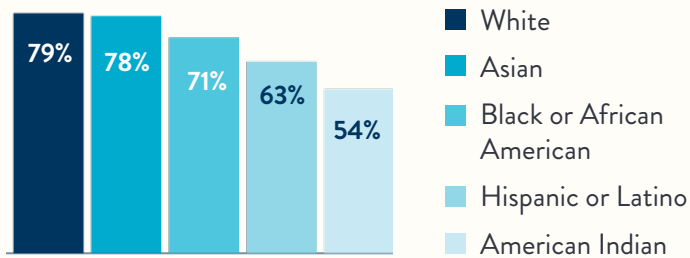
Six-year completion rates for developmental education enrollees ranged from 37% at for profit institutions to 66% at state universities.



### ENROLLING IN COLLEGE

#### RACE / ETHNICITY

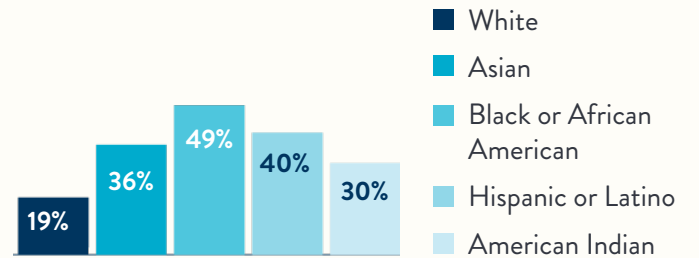
HS graduates of color enrolled in college at lower rates than their white peers.



### DEVELOPMENTAL EDUCATION

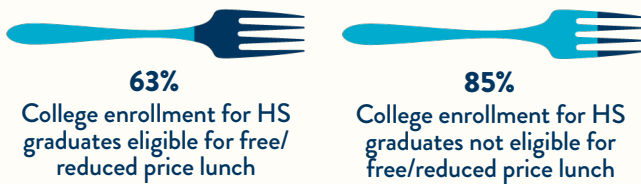
#### RACE / ETHNICITY

HS graduates of color enrolled in developmental education at higher rates than their white peers.



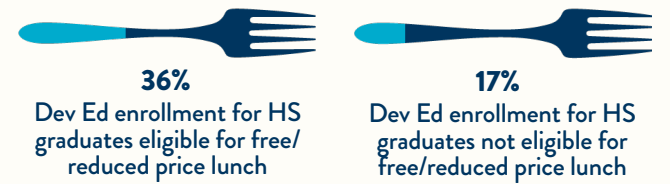
### FREE-OR-REDUCED-PRICE-LUNCH GRADUATES DURING SENIOR YEAR OF HIGH SCHOOL

HS graduates not eligible for free/reduced price lunch enrolled in college at higher rates.



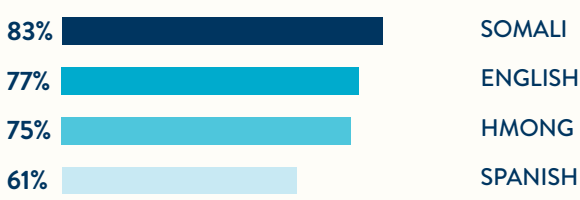
### FREE-OR-REDUCED-PRICE-LUNCH GRADUATES DURING SENIOR YEAR OF HIGH SCHOOL

HS graduates eligible for free/reduced price lunch enrolled in Dev. Ed. at higher rates.



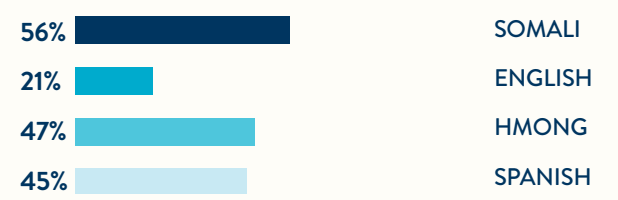
### LANGUAGE SPOKEN AT HOME

HS graduates who spoke Somali at home had the highest rates of college enrollment.



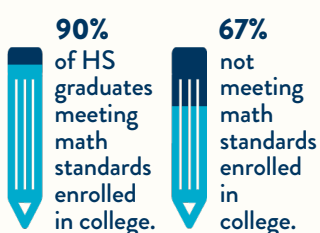
### LANGUAGE SPOKEN AT HOME

HS graduates whose primary home language was not English enrolled in Dev. Ed. at higher rates than English speakers.



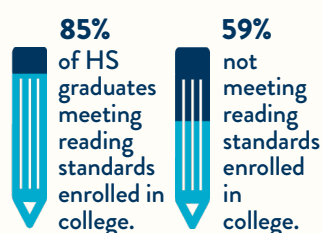
### TESTING

#### MATH



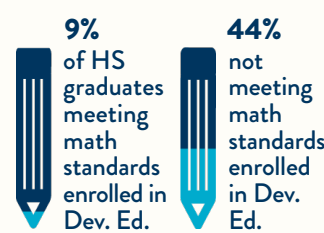
HS graduates meeting standards on statewide accountability tests have higher college enrollment rates.

#### READING



### TESTING

#### MATH



HS graduates meeting standards on statewide accountability tests have lower Dev. Ed. enrollment rates.

#### READING

