

# MINNESOTA MEASURES

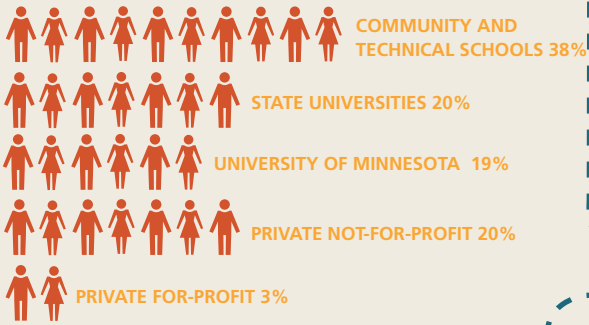
## A REPORT ON HIGHER EDUCATION PERFORMANCE

2014

"To advance the promise of higher education to all Minnesotans and provide the critical information that guides higher education decisions." – Minnesota Office of Higher Education

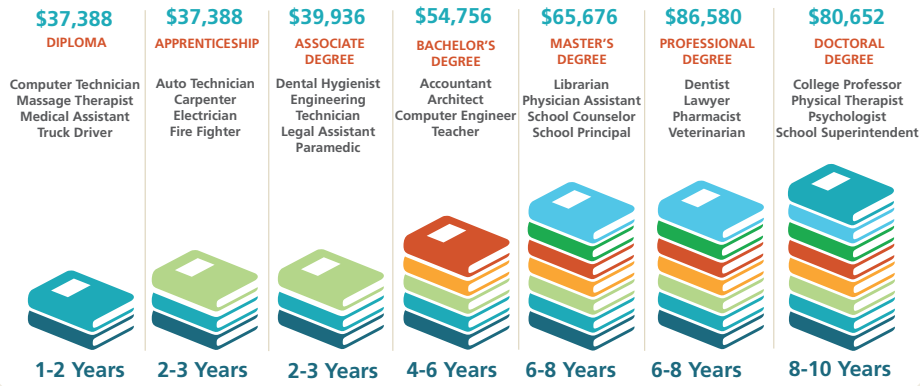
### 1 MINNESOTA OFFERS A VARIETY OF COLLEGE EDUCATION OPTIONS

30,027 Minnesota high school graduates attended 120 Minnesota postsecondary institutions.

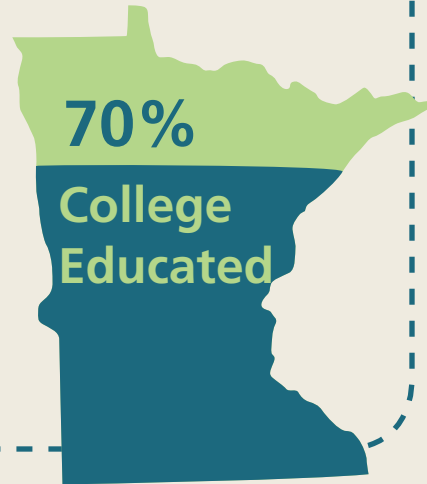


### 2 WHAT IS COLLEGE?

College is the avenue to training and experience after high school required for careers. Most jobs and careers require training after high school.

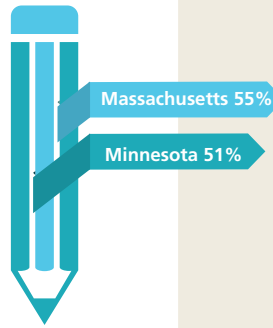


### 3 70% of Minnesotans age 25-64 started or completed college.



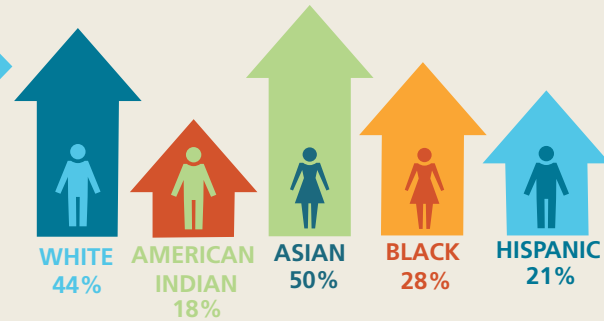
### 4 MINNESOTA RANKS HIGH IN PERCENT OF POPULATION WITH A DEGREE

Minnesota ranks 2nd in the nation with the percentage of the population age 25 to 44 earning an associate degree or higher.



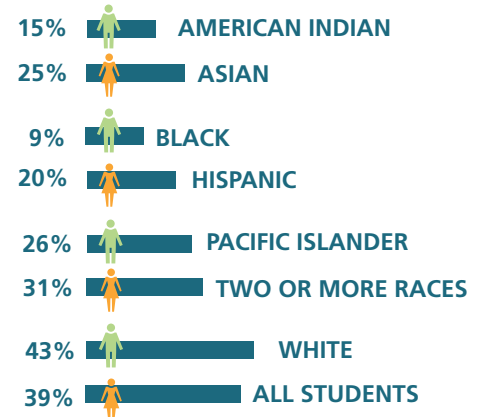
### 5 WHO HAS A DEGREE?

Minnesotans age 25 and older, who have an associate degree or higher.



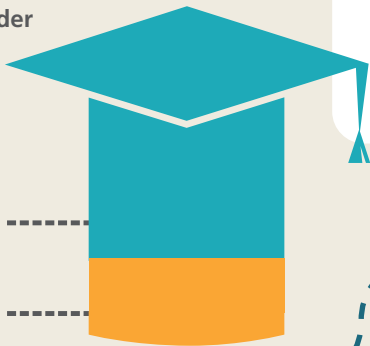
### 6 READY FOR COLLEGE: WHO IS PREPARED FOR COLLEGE?

Minnesota high school ACT test takers college ready in English, algebra, social science and biology.



### 7 WHERE DO MINNESOTA'S HIGH SCHOOL GRADUATES GO TO COLLEGE?

70% chose to stay in Minnesota, 30% went out of state. Colleges in border states were top choices.



### 8 PRICE OF POSTSECONDARY IN MINNESOTA

Estimated net price increased as income increased for students attending Minnesota public and private institutions.



### 9 HOW DO STUDENTS PAY

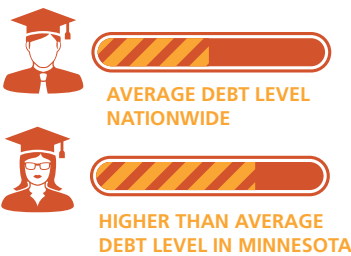
Grants: 71% of first-time, full-time undergraduates attending Minnesota postsecondary institutions received grants and scholarships to help pay the price of attendance.



Loans: 64% of first-time, full-time undergraduates received student loans from federal, state or private sources averaging \$7,388.

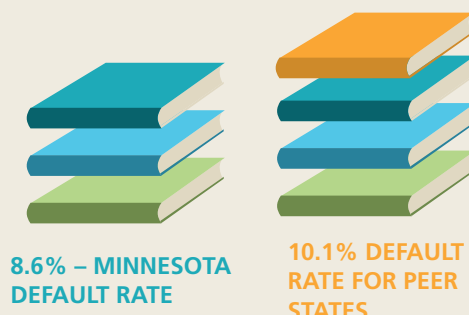
### 10 EDUCATIONAL LOAN DEBT IN MINNESOTA IS HIGH

Average student debt per borrower increased 33%. Minnesota has maintained higher than average debt levels when compared with the nation.



### 11 EDUCATIONAL LOAN DEFAULT IS LOW

Minnesota students had lower default rates compared to students from the same type of institution nationwide.



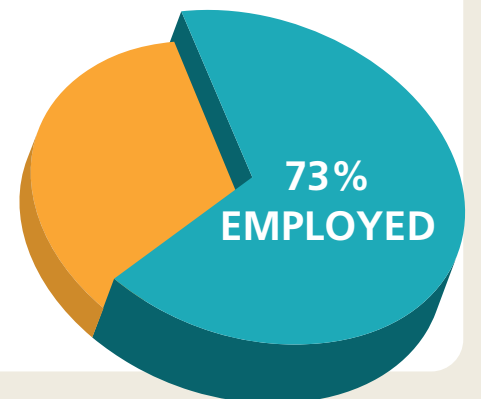
### 14 MINNESOTANS ARE EDUCATED!

The number of academic awards earned annually by Minnesota postsecondary students increased 50% over the past decade.



### 12 EMPLOYMENT OF MINNESOTA GRADS

Most graduates were employed in Minnesota one year after graduation.



### 13 38% OF UNDERGRADUATES ENROLLED AT COMMUNITY OR TECH COLLEGES

These students move more quickly to the workforce.

