



# Direct Admissions Report

February 1, 2024

## Authors

### Aaron Salasek

Coordinator of Direct Admissions Minnesota

Tel: 651-259-3915

[aaron.salasek@state.mn.us](mailto:aaron.salasek@state.mn.us)

### Meredith Fergus

Director of Research

Tel: 651-259-3963

[meredith.fergus@state.mn.us](mailto:meredith.fergus@state.mn.us)

### Wendy Robinson

Assistant Commissioner for Programs,  
Policy, and Grants

Tel: 651-259-3903

[wendy.robinson@state.mn.us](mailto:wendy.robinson@state.mn.us)

### Sally Krager

Research Assistant

[sally.krager@state.mn.us](mailto:sally.krager@state.mn.us)

## About the Office of Higher Education

The Minnesota Office of Higher Education is a cabinet-level state agency providing students with financial aid programs and information to help them gain access to postsecondary education. The agency also serves as the state's clearinghouse for data, research and analysis on postsecondary enrollment, financial aid, finance and trends.

The Minnesota State Grant Program is the largest financial aid program administered by the Office of Higher Education, awarding more than \$224 million annually in need-based grants to Minnesota residents attending eligible colleges, universities and career schools in Minnesota. The agency oversees other state scholarship programs, tuition reciprocity programs, a student loan program, Minnesota's 529 College Savings Plan, licensing and early college awareness programs for youth.

## About This Report

This is a legislative-mandated report. As requested by Minnesota Statutes, section 3.197, this report cost approximately \$5,759.48 to prepare, including staff time.

## Minnesota Office of Higher Education

1450 Energy Park Drive, Suite 350

Saint Paul, MN 55108-5227

Tel: 651.642.0567 or 800.657.3866

TTY Relay: 800.627.3529

Fax: 651.642.0675

Email: [info.ohe@state.mn.us](mailto:info.ohe@state.mn.us)

# Contents

---

Executive Summary ..... 1

Introduction and Program Design ..... 2

Implementation in Minnesota ..... 4

Program Outcomes..... 13

Understanding Participation and Impact of Direct Admissions ..... 15

Challenges and Recommendations ..... 32

Appendix A. Direct Admissions’ Participating High Schools, Community-based Partner Direct Service High Schools, and Colleges’ Tables..... 36

Appendix B. Direct Admissions’ High School Communication Metrics ..... 48

Appendix C. Resources for High Schools and Students ..... 52

Appendix D. Direct Admissions Student Letters Tiers 1 through 6 ..... 59

Appendix E. Legislation for Direct Admissions Minnesota..... 66

## Executive Summary

---

All students graduating from Minnesota high schools are “college material.” This core belief drives the Office of Higher Education’s Direct Admissions Minnesota program. The Direct Admissions program ensures that students from participating high schools will receive a notification early in the fall of their senior year that informs them that there are multiple colleges and universities committed to admitting them, based on their academic performance and anticipated high school graduation. Through a personalized communication, co-signed by their high school and the Office of Higher Education, this program allows students to apply for free to colleges and universities on their letter with confidence, knowing that the “*will I get in?*” question has already been answered with a “*YES!*”

The 2021 Minnesota Legislature funded Direct Admissions Minnesota which offers admission into Minnesota public and private colleges to Minnesota public high school students based on a student’s academic performance through their junior year in high school. Direct Admissions Minnesota has great potential to reduce equity gaps by providing important college-going information to high school students, and eliminating the need for extensive college-going knowledge to navigate the college admissions process. A direct admissions system jump starts the typical college admissions process by proactively admitting students to college. Direct Admissions Minnesota is a partnership project between K-12 and higher education, led by the Minnesota Office of Higher Education. Minnesota is leading the way with this growing national higher education approach and public policy movement, and has firmly situated the program as a common good benefit to students and families in the state.

The challenges and recommendations highlighted in the following report represent important lessons learned so far in the development and implementation of this important new program. With planning and assistance from K-12 and postsecondary partners, the Office of Higher Education anticipates evolving Direct Admissions into a more effective and successful program with each successive year. It is possible to expand Direct Admissions to all 800 of Minnesota’s public high schools, and the agency recommends scaling the program on a voluntary basis over the next three to five years due to the set-up work required at the local level.

This report fulfills the legislative reporting mandate included in the legislation. By February 1, 2024, the Office of Higher Education shall report to the chairs and ranking minority members of the legislative committees with jurisdiction over kindergarten through grade 12 education finance and policy, and higher education on activities occurring. The report must include but is not limited to information about the program design, implementation challenges and recommendations, outcomes, and the feasibility of scaling the program to all public high schools. The full text of the legislation is included in the appendices.

## Introduction and Program Design

---

The process of applying for college can be one filled with stress and anxiety, especially for first generation, low income, and historically underserved populations. Some students self-select out of the process due to perceived barriers or the complexity of the college search process. Many students and families may not be aware that they have multiple college options within the state of Minnesota. Direct Admissions seeks to change this by shifting the paradigm of college admissions to empower students with the knowledge that they are college material and that multiple institutions are ready to admit them. Through a personalized communication, co-signed by their high school and the Office of Higher Education, students are given a list of no less than 29 higher education institutions (and up to 55) that have affirmed that they will admit the student upon application and will waive any application fees. This program allows students to apply for free with confidence to their participating college selections of choice, knowing that the *"will I get in?"* question has already been answered with a *"YES!"*.

Direct Admissions Minnesota aims to reduce self-selection bias in college admissions' practices while reducing equity gaps in college enrollment using four strategies:

- Promoting a college-going culture throughout the state;
- Connecting students, families, and schools with colleges and universities earlier, giving families time to consider their options and plan;
- Promoting awareness of financial aid and the importance of completing the FAFSA or the MN DREAM Act application; and
- Showing students that they have access to a certificate, associate degree, or bachelor's degree if they choose to further their education.

The work of Direct Admissions is conducted collaboratively by high schools, OHE, and colleges via seven critical steps described below.

1. High schools and colleges/universities opt-in to participating in the Direct Admissions program on an annual basis. High schools complete mandatory Data Sharing and Joint Powers Agreements, and colleges/universities complete mandatory Data Sharing Agreements.
2. High schools notify families of the school's participation in the program and give a Tennessee/FERPA notice to opt-out, per local directory/data processes. Excluding students whose families choose to opt-out, high school counselors review end of junior year unweighted cumulative GPA and course grades in three core areas (math, science, and English) to assign the student to one of the six admission tiers which have been set in consultation with participating colleges and universities.
3. High schools notify students and their parents or guardians by formal letter, email, and/or portal notification of their "acceptance" for Direct Admissions and available college options.
4. Students respond to the notification and choose the institution(s) they wish to be directly admitted to as a next step in the admissions process. Responses are collected by the high school.
5. High schools securely transmit that data to OHE.
6. OHE compiles and securely transmits the data and the student's GPA to colleges. If a student chooses to supply optional supplemental information, that gets transferred as well.

7. Colleges contact the student to inform them of next steps and engage students as early as possible.

Students are not required to apply to any of the colleges listed on their Direct Admissions letter, nor are students limited to applying to just those colleges they qualify to through Direct Admissions. The program does not limit student choices or minimize the importance of maintaining academic success in the senior year. As such, Direct Admissions materials communicate the following expectations:

- Students are expected to maintain their approximate academic performance level during their senior year;
- Students are expected to graduate in spring or early summer 2024;
- Students must complete admissions applications and submit any requested additional materials for colleges they are interested in according to the college's application deadlines; and,
- Students should complete the FAFSA or MN DREAM Act application for financial aid consideration.

Upon applying, Direct Admissions students then move through the same enrollment, financial aid, and orientation processes as any other students at the college of their choice.

## Implementation in Minnesota

---

The 2022-2023 pilot year of the program had 46 high schools representing 28 different counties throughout the state notify the Office of Higher Education of their desire to participate in Direct Admissions. In assessing work required, staff availability, and timing, seven high schools chose to delay participation until the 2023-2024 school year. The 39 participating high schools enrolled an estimated 6,989 students, and almost half of enrolled seniors (47%) at participating schools identified as Black, Indigenous, and students of color. Almost a quarter of enrolled seniors (23%) were eligible for free and reduced-price meals. The pilot year also had 50 colleges and universities participating.

The program saw a significant expansion in academic year 2023-2024. Implementation requires coordination of several key participant groups: (1) K-12 secondary high schools; (2) postsecondary colleges and universities; (3) MDE-approved K-12 technology Student Information Systems (SIS) platforms; and (4) Office of Higher Education.

For the current 2023-2024 year of the program, the Office of Higher Education issued a call to high schools to participate in Direct Admissions Minnesota in March 2023. Nominations were encouraged from guidance counseling offices locally or at the district level, with the support of an administrator. For high schools, OHE assured there would be no cost to participate. OHE also offered additional funding to offset costs for high school staff time, e-transcript costs, high school technology changes, and/or related program expenses.

OHE also invited public and private non-profit colleges and universities to participate in Direct Admissions. Postsecondary institutions were asked to waive all applications fees regardless of the date of application and to choose a specific academic tier for which they would directly admit students. Colleges were also asked to proactively follow-up with students shortly after receiving data from the agency, to build early relationships and capacity with students and families. Figure A1 in the Appendices details the organization schema and interplay for the program. This includes:

- The college and K-12 advisory workgroups' counsel around recommendations and decisions for program implementation to OHE (membership of which is comprised of partners from each sector);
- OHE's recruitment of new, as well as support to existing, high schools and colleges around technical implementation within local SIS platforms (Infinite Campus, jmc, Synergy/Edupoint, Skyward, and PowerSchool); assisting staff with academic review criteria and questions; creating and disseminating communication and marketing material that supports the program; shaping the timeline for survey/letter notifications being sent; the overall transfer of data between high schools/SIS systems and college and university partners; and distributing funding to high schools and districts;
- Districts and high schools coordinating necessary Data Sharing and Joint Powers contractual agreements; staffing and coordinating the program's FERPA notification to families, the academic review and letter notification processes; following up with colleges and universities on behalf of students regarding transcripts or additional admissions' materials requests; and providing feedback to OHE;
- Public, tribal, and private colleges, universities, and higher education system offices' promoting new membership and supporting existent institutions in the work; coordinating necessary Data Sharing



agreements; selecting a respective academic tier; staffing and coordinating the program’s data retrieval and follow-up communication to students and families; and providing feedback to OHE;

- All the above is to the benefit of students and families, who receive the program notifications and letter surveys; select colleges and universities of choice; and complete any necessary admissions requirements prior to ultimately enrolling in an institution of choice.

Each partner group’s primary goals are expounded upon in the following sections, with OHE serving as the primary collaborator and organizer of program logistics and execution.

## **Advisory Working Groups – K-12 and Postsecondary**

In spring 2023, OHE convened two working groups of subject matter experts to assist with program design, anticipating barriers and challenges, and for providing on-going feedback about the Direct Admissions program. Volunteers agreed to serve on one of two working advisory groups, one K-12 and the other postsecondary, depending on the area of expertise. These two groups meet every other month or on an as-needed basis (if an immediate need arises), and help Direct Admissions be successful, innovative, partner-balanced, and student-centered by making recommendations ranging from the work required of participating schools, technology needs, and other logistics that arise throughout the year.

Implementation work group representation includes volunteers from the agency; Minnesota State institutions and the system office; University of Minnesota institutions; the Minnesota Private College Council and member institutions; the Minnesota Department of Education; the Minnesota School Boards Association; and SIS technology partners. A full list of K-12 advisory committee representatives can be found in Table A1 and the Postsecondary advisory committee in Table A2.

The K-12 Working Group focus for implementation included the following tasks:

- Determining criteria for selecting pilot high schools and districts;
- Identifying the target student population;
- Identifying measures of success;
- Integrating the Direct Admissions program with other college preparation and planning activities; and,
- Documenting the work required for participating schools and districts.

The Postsecondary Working Group focus for implementation included the following tasks:

- Identifying the target student population;
- Identifying measures of success;
- Selecting academic benchmarks;
- Integrating the Direct Admissions program with existing admissions processes and systems; and,
- Documenting the work required for participating colleges.



## Identifying Target Students and High Schools for Direct Admissions

This program seeks to facilitate the transition of high school seniors, particularly students of color, American Indian students, lower-income students, and students with disabilities to a postsecondary program by creating a direct admissions pathway. Per the legislation, the participating high schools should be geographically and demographically diverse. In the information sent to high schools, OHE noted that should more high schools be interested in participating than could be financially supported by the program, preference would be given to schools that are above 30% for free and reduced lunch participation and/or have 30% or more students who were Black, Indigenous, and persons of color. To date, no high school that has had interest in participating has been turned away in any program year, pilot or current. Direct Admissions' program goals include eliminating disparities in college admissions and enrollment resulting from college knowledge, parent educational attainment, and other factors. Therefore, the program's target student population includes demographic groups with a lower than average college-going rate. Direct Admissions is designed to spark and supplement other college exploration activities offered by a high school and is not designed to tell students which college or university they should attend. The program's participating high schools include schools with a significant number of students of color, low-income students, and English language learners from across the state to achieve statewide representation.

Participating high schools were asked to complete six tasks:

1. Review end of junior year unweighted GPA and course grades to see if the student meets the admission criteria of the participating colleges and universities.
2. Notify high school seniors and their parents or guardians of their "acceptance" and encourage them to learn more about the programs offered throughout the participating colleges.
3. Prompt students to respond to the notification and choose the institutions to which they wish to be directly admitted to. Students can choose one or more of Minnesota's colleges or universities. Once selected, the specified colleges are to reach out with admissions information, and request that students complete the next institutional application step.
4. Collect the student responses and securely transfer that data to the Office of Higher Education.
5. Send each student's transcript to each college they selected.
6. Collaborate with and provide feedback to OHE regarding implementation, student experience, and opportunities for process and program improvement.

The developing future cohort for 2024-2025 proves exciting. In addition to those schools choosing to delay or unable to implement in the current 2023-2024 fiscal year, but wanting to remain in the program for the next, the current waitlist for the program includes another 18 high schools who plan to nominate for 2024-2025 fiscal year's start, bringing the initial interest for schools up to 52.

## 2023-2024 Participating High Schools and Community-based Organizations – Geographic and Demographic Representation

For the current program year, 142 high schools notified the Office of Higher Education of their desire to participate in Direct Admissions, as detailed in Table A3 of the Appendix. After reviewing the work needed to be

ready to participate in 2023-2024, 22 schools from the original pool of nominations chose to delay participation until the 2024-2025 school year. By early fall 2023, OHE had 120 total high schools set to participate in the program’s school year. By the end of the fall semester, four additional high schools chose to formally delay to next year. An additional five high schools were encouraged by the agency to delay participation to 2024-2025 after multiple conversations. Most of these high schools failed to complete the data and financial contractual agreements with the agency, and one was unresponsive to the agency’s outreach. This dropped the total list down to 111 total high schools who could fulfill the program’s requirements by late January, of which we have 98 reporting data as of submission of this report. For reporting purposes, OHE is using the 120 schools whose intent was to complete the program at the school year’s outset to discuss outcomes from this year of the program.

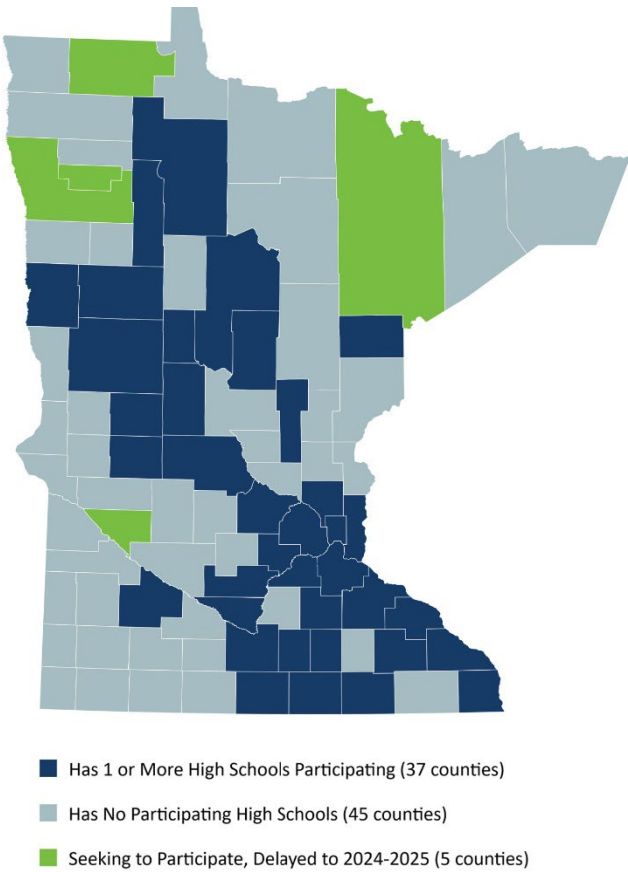
New this year was participation by the nonprofit college access organization College Possible Minnesota, who amplified the reach of the program to students in 31 of their direct service high schools that were not already participating through the intake process. Through their use of technology, their organization’s coaches communicate with students about their Direct Admissions status, built out college lists, and complete other features of the college search process. These College Possible-serving high schools are detailed in detailed in Table A4 of the Appendix.

**Student Demographics**

The 120 participating high schools enroll an estimated 22,505 students. Almost half of enrolled seniors (46%, detailed in Table 1) at participating schools are Black, Indigenous, and students of color. Over a third of enrolled seniors (35%, detailed in Table 2) at participating schools are eligible for free and reduced-price meals.

- Of those 120 participating high schools, 71 were located in the seven county Twin Cities region comprised of Anoka, Carver, Dakota, Hennepin, Ramsey, Scott and Washington counties.
- High schools who indicated interest at the outset of summer came from 42 counties across the state. By August, participating high schools represented 37 counties throughout the state. Anticipated and current participation by county is detailed in Figure 1. This data is outlined in Table A3’s Participating High Schools for 2023-24.

**Figure 1. Participating Schools by County for Academic Year 2023-2024**



- Among students enrolled in grade 12 at a participating high school in 2023-2024, 59% of students attended a school in the 7-county Twin Cities region.

**Table 1. Number of Enrolled Seniors at Direct Admissions Participating High Schools by Race and Ethnicity, 2023-2024**

| Race and Ethnicity                                      | Count of Enrolled Seniors | Percent of Total Enrolled Seniors |
|---|---------------------------|-----------------------------------|
| Black or African American                               | 3,376                     | 15%                               |
| American Indian or Native American (Federal Definition) | 579                       | 3%                                |
| Asian   | 2,375                     | 11%                               |
| Hispanic or Latino                                      | 2,891                     | 13%                               |
| White   | 12,204                    | 54%                               |
| Native Hawaiian or Pacific Islander                     | 17                        | 0%                                |
| Two or More Races                                       | 1,063                     | 5%                                |
| <b>Total</b>  | <b>22,505</b>             | <b>100%</b>                       |

Note: Count of enrollment at end of students’ junior year of June 2023 was provided by the Minnesota Department of Education.

**Table 2. Number of Enrolled Seniors at Direct Admissions Participating High Schools by Free and Reduced-Price Meals, 2023-2024**

| Free and Reduced-Price Meals | Count of Enrolled Seniors | Percent of Total Enrolled Seniors |
|------------------------------|---------------------------|-----------------------------------|
| N                            | 14,530                    | 65%                               |
| Y                            | 7,975                     | 35%                               |
| <b>Total</b>                 | <b>22,505</b>             | <b>100%</b>                       |

Note: Count of enrollment at end of students’ junior year of June 2023 was provided by the Minnesota Department of Education.

## Requests for Direct Admissions

As of January 25, 2024, 98 high schools reported 31,292 individual requests for Direct Admissions by 4,512 students (or about 20% of students receiving info about the program).

Of those requests, 60% were requests for admissions to a Minnesota State college (42%) or university (18%). The remaining 40% were distributed to private non-profit colleges and universities (28%), the University of Minnesota (10%, including the Crookston, Duluth, Morris, or Rochester campuses), and tribal colleges (2%), as shown in Table 3.

**Table 3. Number of Students Requesting Direct Admissions by Sector**

| Sector                            | Count of Admissions Requests | Percent of Admissions Requests |
|-----------------------------------|------------------------------|--------------------------------|
| Minnesota State 2-Year Colleges   | 13,103                       | 42%                            |
| Minnesota State Universities      | 5,727                        | 18%                            |
| University of Minnesota           | 3,023                        | 10%                            |
| Private Colleges and Universities | 8,933                        | 28%                            |
| Tribal Colleges                   | 506                          | 2%                             |
| <b>Total</b>                      | <b>31,292</b>                | <b>100%</b>                    |

Based on an academic review, students could be eligible for direct admissions to up to 55 colleges (postsecondary participants are detailed in Table A5 of the Appendix). Each participating college opted into one of six academic thresholds or tiers at which they would directly admit students, and the percentage of student distribution requesting information by tier is detailed in Table 4. The process for establishing these academic tiers is described in the next section.

A little over 40% of students requesting direct admissions at one or more participating colleges were in Tier 6 (cumulative unweighted grade point average of 3.50 or higher and a C average in all math, English, and science core courses taken in 10<sup>th</sup> and 11<sup>th</sup> grades) as shown in Table 6. The next largest group was students in Tier 5 (24%, cumulative unweighted grade point average of 3.0 or higher), followed by the open-access Tier 1 (18%, cumulative unweighted grade point average lower than 2.50).

**Table 4. Number of Students Requesting Direct Admissions by Academic Tier**

| Academic Tier | Unweighted Grade Point Average (4.0 scale; must include Pass/No Pass Grades) | Course Grades: Math, English, and Science Courses Taken in 10 <sup>th</sup> and 11 <sup>th</sup> Grades | Number of Colleges Selecting this Academic Tier | Unduplicated Count of Students Requesting Direct Admissions | Percent of Total Students Requesting Direct Admissions |
|---------------|--|---|---|---|--|
| 1             | Less than 2.50 GPA   | No course grade requirements  | 29  | 814   | 18%  |
| 2             | 2.50-2.74  | No course grade requirements  | 3   | 321   | 7%   |
| 3             | 2.75-2.99  | No course grade requirements  | 4   | 153   | 3%   |
| 4             | 2.75-2.99  | C average or higher in all 3 course subject areas   | 6   | 323   | 7%   |
| 5             | 3.00-4.00  | No course grade requirements  | 10  | 1,075   | 24%  |
| 6             | 3.50-4.00  | C average or higher in all 3 course subject areas   | 3   | 1,826   | 41%  |
| <b>All</b>    | <b>n/a</b>   | <b>n/a</b>  | <b>55</b>                                       | <b>4,512</b>  | <b>100%</b>  |

# Inviting Colleges to Participate in Direct Admissions

OHE invited public and private non-profit colleges and universities to participate in Direct Admissions. In order to participate, institutions were required to complete six tasks:

1. Waive all Direct Admissions’ students’ application fees regardless of the date of application.
2. Choose a specific academic tier for which they would directly admit students. Students were matched to the chosen academic tiers based on a review of their end of junior year unweighted GPA and average core course grades in 10<sup>th</sup> and 11<sup>th</sup> grade English, math, and science courses.
3. Receive data from OHE identifying the students choosing to be directly admitted to their institution.
4. Follow-up with the student in a timely manner with information regarding completion of the institution’s application. In order to minimize the amount of data each high school needs to share with OHE and the participating colleges, students were asked to complete the institution’s application for admissions or additional information requested via forms by published deadlines to secure their spot.
5. Work with the student and their high school counselor should unusual circumstances occur. Should a college have concerns regarding the admissibility of a Direct Admissions student the college would work with OHE, the high school, and student to address unusual circumstances and challenges to the best of their ability.
6. Collaborate with and provide feedback to OHE regarding implementation, student experience, and opportunities for process and program improvement.

Colleges were not asked to admit the student into a specific academic program or to lower their academic standards.

## Academic Measures

The academic tiers were set during the pilot year and remained the same for the 2023-2024 academic year. Colleges chose one of six academic tier options for Direct Admissions. The tiers consisted of unweighted cumulative Grade Point Average (GPA) bands on a 4.0 scale, and within two sets of tiers, a student’s course grades in 10<sup>th</sup> and 11<sup>th</sup> grade math, English, and science core areas. Participating colleges were required to “opt into” one of the academic tiers or groupings as shown in Table 5. Between last year’s pilot and the current year’s launch, the percentage of admissions requests and of total students requesting Direct Admissions to institutions has been nearly proportional by tiers and to institutional types.

**Table 5. Direct Admissions Academic Tiers**

| Academic Tier | Unweighted Grade Point Average (4.0 scale; must include Pass/No Pass Grades) | Course Grades: Math, English, and Science Courses Taken in 10 <sup>th</sup> and 11 <sup>th</sup> Grades | Number of Colleges Selecting this Academic Tier | Total Colleges appearing on the Student’s Notification |
|---------------|--|---|---|--|
| 1             | Less than 2.50 GPA   | No course grade requirements  | 29  | 29   |
| 2             | 2.50-2.74  | No course grade requirements  | 3   | 32   |

| Academic Tier | Unweighted Grade Point Average (4.0 scale; must include Pass/No Pass Grades) | Course Grades: Math, English, and Science Courses Taken in 10 <sup>th</sup> and 11 <sup>th</sup> Grades | Number of Colleges Selecting this Academic Tier | Total Colleges appearing on the Student's Notification |
|---------------|--|---|---|--|
| 3             | 2.75-2.99  | No course grade requirements  | 4   | 36   |
| 4             | 2.75-2.99  | C average or higher in all 3 course subject areas   | 6   | 42   |
| 5             | 3.00-4.00  | No course grade requirements  | 10  | 52   |
| 6             | 3.50-4.00  | C average or higher in all 3 course subject areas   | 3   | 55   |

## K-12 Technology Infrastructure

One of the goals of Direct Admissions has been to use technology to ease the burden on K-12 and college staff. High schools were encouraged to leverage their existing Student Information System (SIS) vendor if possible. The Minnesota Department of Education (MDE) currently lists five approved SIS vendors that are compliant with the requirements of technology from the U.S. Department of Education referred to as “Ed-Fi”. Ed-Fi data submission involves uploading student-level data from a district, high school, or charter school's SIS directly to MDE's Ed-Fi servers. The steps to complete this process are unique to each SIS vendor. SIS vendors provide specific set-up guidance to their districts and charters on uploading data. The five vendors include: Infinite Campus, jmc, PowerSchool, Skyward, and Synergy/Edupoint. Building this functionality into existing K-12 SIS technologies minimizes the need for additional data sharing while also allowing the program to leverage existing K-12 communications through functionality in the SIS platforms.

At the year's outset, OHE contacted the five SIS vendors and discussed compatibility of their SIS system and the school needs for Direct Admissions. The distribution of schools across the five platforms is detailed in Table 6.

**Table 6. Participating High Schools in Direct Admissions by Student Information System**

| Student Information System | Number of Direct Admissions High Schools |
|----------------------------|--|
| Infinite Campus            | 72                                       |
| jmc                        | 14                                       |
| PowerSchool                | 7  |
| Skyward                    | 12                                       |
| Synergy/Edupoint           | 12                                       |
| Unknown                    | 3  |
| Total                      | 120                                      |

The Direct Admissions program within the Infinite Campus SIS was operational for the 2022-2023 and 2023-2024 academic years (currently 70 schools for 2023-2024). Another vendor, jmc, finished documentation and piloted implementation with two high schools in early January 2024. PowerSchool is currently working with OHE's data team on integration, to launch in the fall of 2024. Synergy/Edupoint and Skyward are both in initial

conversations with the agency. OHE staff provided the technical specifications required for the project to all SIS vendors, who in turn identified or are working on identifying existing functionality within their system to meet the requirements as well as functionality that would need to be developed. The technology developed was integrated into their software platform and made available to all of their contracted high schools, not just those participating in Direct Admissions.

In the event the high school felt they were unable to utilize their SIS due to staffing or other mitigating factors, a workaround was developed by the agency. OHE worked with school and district staff to first identify similar functionality within their local SIS, usually a report or query that had the data needed to execute the program's academic review. Schools were then given the option of completing the academic review via calculating results using an Excel spreadsheet that OHE created, or by manual review. Notifications to students were also distributed via an SIS survey, or Google Sheets surveys, both of which collected student responses. Responses were collected manually by school staff opting for a mailed letter or direct-to-student email. The Google Sheets survey also collected student survey responses and downloaded them into a file for counselor review. Data files were created as part of the SIS software for transfer to OHE. OHE provided templates and instructions for creating the data file and uploading their student responses via secure web portal. The secure data portal served as the main hub for the exchange of data between high schools, OHE, and colleges. OHE monitored program activity via the data uploads to ensure fidelity of implementation and troubleshoot participation at a student or school level. Figure A2 in the Appendices details' the overall Direct Admissions' data flow for the program, including the transitions between the various program partners:

- OHE has Joint Powers and Data Sharing Agreements in place for high schools, as well as Data Sharing Agreements with colleges, to securely transfer the data received via the student selection process;
- OHE's has contracts in place for software module development with several of the K-12 SIS vendors (Infinite Campus, jmc, Synergy/Edupoint, Skyward, and PowerSchool), who service the participating high schools and districts in utilizing the local platform and providing technical support;
- Districts and high schools use local technology to generate a FERPA notification to families to opt-out of the program, as well as the means by which students and families should do so;
- Districts and high schools use their local SIS platform to produce a Direct Admissions report in conducting the academic review for student tier placement; generate the student survey notification via their communication modality of choice (email, letter, etc.); and encourage students to respond within the platform or technology being utilized to select institution(s) of preference;
- Districts and high schools use local technologies to send transcripts or work with students in submitting additional admissions' materials requested;
- Public, tribal, and private colleges and universities securely retrieve transferred student data in a timely manner and contact students through local communication and follow-up efforts regarding any specific next steps or applications needs.



# Program Outcomes

## Measures of Success: Implementation in current 2023-2024 program year

Success for Direct Admissions in 2023-2024 is measured by fidelity of implementation as well as student outcomes. Success in implementation of the program is achieved when the milestones shown in Table 7 were met, and overall, success in implementation was achieved for 2023-2024.

**Table 7. Milestones of Successful Implementation and Results for 2023-2024**

| Milestone                        | Success Threshold   | Results   |
|----------------------------------|---|---|
| <b>College Participation</b>     | Participation by 50 or more Minnesota colleges  | 55 colleges participated in 2023-2024   |
| <b>High School Participation</b> | 87 or more high schools agree to participate  | 142 high schools sought to participate; 120 participated and 111 have the potential to fulfill program outcomes (with 98 schools reporting data as of submission of this report)  |
| <b>High School Participation</b> | Geographic distribution achieved  | High schools who indicated interest at the outset of summer comprised 42 counties across the state. By August, participating high schools represented 37 counties throughout the state. Among students enrolled in grade 12 at a participating high school in 2023-2024, 59% of students attended a school in the 7-county Twin Cities region, and 41% were from among the remaining 35 counties. |
| <b>High School Participation</b> | More than 30% of students enrolled in 12 <sup>th</sup> grade at a participating high school are: 1) Eligible for free and reduced-price meals, OR 2) Are students from historically underserved populations | Of students enrolled in 12th grade at a participating high school, 46% identify as Black, Indigenous, and students of color, and 35% are eligible for free and reduced-price meals  |
| <b>Academic Tiers</b>            | Academic tiers are agreed to by all colleges and understood by participating high schools   | Tiers agreed to by colleges opting in, and academic tier distribution results remained statistically proportional to pilot year; College survey data to follow in Spring 2024   |
| <b>Academic Tiers</b>            | Academic tiers understood by participating high schools   | Academic tier distribution results remained statistically proportional to pilot year; High school survey data to follow in Spring 2024  |

| Milestone            | Success Threshold  | Results  |
|----------------------|--|--|
| <b>Work Required</b> | Work required of participating high schools and colleges is reasonable | High school survey data to follow in Spring 2024 |
| <b>Launch date</b>   | First letters go to students in October 2023                           | First letters went out in August 2023            |

In terms of the current program year’s measurable student outcomes, the number of enrolled seniors requesting Direct Admissions info by high school for Fall 2023 is detailed in Table B1 of the Appendices. While this table is a point-in-time update on deliverables and student impact, there are numerous components the agency is gauging. The Office of Higher Education will shortly be surveying both high school and college staff participating in the program to determine if the program met its implementation goals in the areas of academic tier thresholds, the reasonableness of work required, and program launch timing. In terms of program awareness and development as outcomes, 2023-2024 also saw a good deal of collaboration within the working groups for both K-12 and higher education partners; national coverage and phenomenal student stories; and a good deal of progress with SIS technology vendors for future program success. Measures of student success derive from the prior 2022-2023 pilot year’s program.

# Understanding Participation and Impact of Direct Admissions

---

## Measures of Success: Student Outcomes from prior 2022-2023 pilot year

The success of Direct Admissions will be measured by the following student outcome indicators:

- the number of admissions inquiries between October-July,
- the FAFSA Completion rate (indirect outcome),
- the high school completion rate of seniors (indirect outcome),
- the immediate college enrollment rate of seniors, and
- the immediate in-state college enrollment rate of seniors.

When possible and appropriate, outcome indicators will be disaggregated by race and ethnicity, gender, free and reduced-price meals eligibility, English language learner status, school and district, and geography.

The following section presents data on two outcome metrics for Direct Admissions. These outcome metrics include:

- FAFSA Filing, and
- Enrollment in a Minnesota College in Fall after High School (preliminary data).

To evaluate the impact of the Direct Admissions program, outcome metrics are shown for participating 12<sup>th</sup> grade students, 12<sup>th</sup> grade students at participating high schools, and all 12<sup>th</sup> grade students in the state enrolled in 2022-2023. In addition, outcomes for students enrolled at a participating high school during the two years immediately preceding participation in Direct Admissions (2020-2021, 2021-2022) is shown. This data is shown for comparison purposes. However, given the impact of the COVID-19 pandemic on high school enrollment, high school graduation, and college enrollment, it should be noted that these comparisons do not control for all other forces potentially impacting the outcomes measured during this time period.

### Summary of Outcomes

Overall, students participating in Direct Admissions generally had higher FAFSA filing rates and higher college enrollment rates as compared to non-participants. This remained true when data was disaggregated by sex, race and ethnicity, and eligibility for free or reduced-price meals. In addition, high schools participating in Direct Admissions during the 2022-2023 academic year had higher FAFSA filing rates and higher college enrollment rates as compared to the two years immediately preceding participation in Direct Admissions. While this evaluation is at its earliest stage, results are promising.

During the first pilot year of Direct Admissions, the 2022-2023 academic year, 36 high schools and 1,947 students participated in the program by engaging student letters/surveys. The 1,947 students represent 28% of 12<sup>th</sup> grade students enrolled in participating high schools in 2022-2013. Participation rates varied by timing of the student notification. Schools with a participation rate of 50% or more all sent student notifications in October.

As more schools participate in Direct Admissions and as schools participate longer, it is expected that the participation rate will increase due to better awareness of the program and improved integration with district-sponsored college and career exploration activities. Statistics about participation by school can be found on Table 8.

### Data Sources

Data to determine outcomes of students participating in Direct Admissions comes from the following sources:

- Direct Admissions participation data was collected by OHE from the participating high schools for students who chose to be directly admitted to one or more participating colleges.
- Enrollment data for all 12<sup>th</sup> graders enrolled at a Minnesota public or charter school and their demographics was provided by the Minnesota Department of Education. This is the same file used by OHE for Minnesota’s FAFSA Completion Goal reporting.
- FAFSA information was provided the U.S. Department of Education to the Office of Higher Education for all Minnesota residents. This is a file OHE receives in order to administer state financial aid programs.
- Data on preliminary college enrollment was drawn from the Office of Higher Education’s MN Aid system which includes all students enrolled in college between July 1, 2023 and December 31, 2023 and eligible for a Minnesota State Grant by having enrolled in a Minnesota institution participating in state financial aid and completing the FAFSA or other state aid application.
- Data on college enrollment in Minnesota is drawn from the Office of Higher Education’s student-level enrollment database. This data is submitted by colleges following the end of each academic term. Fall term data is not yet available for students enrolled in grade 12 in 2022-2023.
- Data on college enrollments outside of Minnesota will be drawn from Minnesota’s Statewide Longitudinal Education Data System (SLEDS) which receives data on Minnesota students enrolling in college outside of Minnesota from the National Student Clearinghouse. This data is not yet available for students enrolled in grade 12 in 2022-2023.

**Table 8. Students Participating in Direct Admissions by High School 2022-2023**

| Participating High School Name | District                            | Number of 12 <sup>th</sup> Grade Students | Percent of 12 <sup>th</sup> Grade Students Participating | Date First Data Transferred to OHE |
|--------------------------------|-------------------------------------|---|--|------------------------------------|
| Beacon ALP*                    | Bloomington Public School District  | 120                                       | 16%  | 10-Nov-2022                        |
| Blue Earth Area Secondary      | Blue Earth Area School District     | 83  | 19%  | 4-Jan-2023                         |
| Buffalo Senior High            | Buffalo-Hanover-Montrose Schools    | 456                                       | 34%  | 25-Oct-2022                        |
| Cannon Falls Secondary         | Cannon Falls Public School District | 86  | 15%  | 9-Nov-2022                         |
| Clearbrook-Gonvick Secondary   | Clearbrook-Gonvick School District  | 29  | Fewer than 10  | 16-Nov-2022                        |

| <b>Participating High School Name</b> | <b>District</b>                      | <b>Number of 12<sup>th</sup> Grade Students</b> | <b>Percent of 12<sup>th</sup> Grade Students Participating</b> | <b>Date First Data Transferred to OHE</b> |
|---------------------------------------|--------------------------------------|---|--|---|
| Cloquet Senior High                   | Cloquet Public School District       | 175   | 59%  | 26-Oct-2022                               |
| Dassel-Cokato Alternative Center*     | Dassel-Cokato Public School District | 71  | 15%  | 1-Nov-2022                                |
| Dassel-Cokato Senior High             | Dassel-Cokato Public School District | 89  | 25%  | 1-Nov-2022                                |
| Detroit Lakes Senior High             | Detroit Lakes Public School District | 205   | 19%  | 28-Oct-2022                               |
| Eden Prairie Senior High              | Eden Prairie Public School District  | 762   | 20%  | 30-Nov-2022                               |
| Falcons Online Academy*               | Faribault Public School District     | 21  | Fewer than 10  | 14-Oct-2022                               |
| Faribault Senior High                 | Faribault Public School District     | 225   | 60%  | 14-Oct-2022                               |
| Fertile-Beltrami Secondary            | Fertile-Beltrami School District     | 33  | Fewer than 10  | 1-Nov-2022                                |
| Henry High School                     | Minneapolis Public School District   | 208   | 7%   | 17-Nov-2022                               |
| Highland Park Senior High             | Saint Paul Public Schools            | 297   | 6%   | 3-Mar-2023                                |
| Hmong College Prep Academy            | Hmong College Prep Academy           | 172   | 31%  | 1-Dec-2022                                |
| Hopkins Senior High                   | Hopkins Public School District       | 509   | 23%  | 8-Nov-2022                                |
| Jefferson Senior High                 | Bloomington Public School District   | 380   | 43%  | 10-Nov-2022                               |
| Johnson Senior High                   | Saint Paul Public Schools            | 262   | 12%  | 26-Jan-2023                               |
| Kennedy Senior High                   | Bloomington Public School District   | 348   | 12%  | 10-Nov-2022                               |
| Pequot Lakes Senior High              | Pequot Lakes Public Schools          | 148   | 12%  | 1-Nov-2022                                |
| Phoenix Learning Center*              | Buffalo-Hanover-Montrose Schools     | 21  | Fewer than 10  | 25-Oct-2022                               |
| Red Rock Central Secondary            | Red Rock Central School District     | 31  | 61%  | 14-Oct-2022                               |
| Richfield Senior High                 | Richfield Public School District     | 314   | 37%  | 21-Oct-2022                               |
| Rockford Secondary                    | Rockford Public School District      | 110   | 25%  | 27-Oct-2022                               |
| Roosevelt High School                 | Minneapolis Public School District   | 200   | 51%  | 24-Oct-2022                               |

| Participating High School Name | District                              | Number of 12 <sup>th</sup> Grade Students | Percent of 12 <sup>th</sup> Grade Students Participating | Date First Data Transferred to OHE |
|--------------------------------|---------------------------------------|---|--|------------------------------------|
| Spectrum High School           | Spectrum High School                  | 105                                       | Fewer than 10  | 1-Nov-2022                         |
| Spring Lake Park Senior High   | Spring Lake Park Public Schools       | 457                                       | 32%  | 14-Nov-2022                        |
| St. Louis Park Senior High     | St. Louis Park Public School District | 394                                       | 19%  | 14-Nov-2022                        |
| SW Metro ALC                   | Southwest Metro Intermediate 288      | 44  | Fewer than 10  | 25-Oct-2022                        |
| TrekNorth High School          | TrekNorth High School                 | 29  | 66%  | 1-Nov-2022                         |
| Venture Academy High School    | Venture Academy                       | 52  | 56%  | 21-Oct-2022                        |
| Waseca Senior High             | Waseca Public School District         | 152                                       | 28%  | 20-Oct-2022                        |
| Washburn High School           | Minneapolis Public School District    | 394                                       | 43%  | 20-Oct-2022                        |
| Zumbrota-Mazeppa Senior High   | Zumbrota-Mazeppa School District      | 87  | 60%  | 25-Oct-2022                        |
| Total                          | All                                   | 7,069                                     | 28%  |                                    |

\*Note that students at the identified alternative learning centers and programs participated in Direct Admissions via their local high school, but are shown here by alternative learning center or program name in order to allow the comparison with other students in the same program or location.

## Demographics of Participants

The following section presents data on the demographics of 12<sup>th</sup> grade students participating in Direct Admissions.

### Gender

Among first year participants, 55% identified as female, and 45% as male as shown in Table 9. This distribution varies from all enrolled 12<sup>th</sup> grade students, of whom 49% identified as female and 54% as male. As a result, the participation rate in Direct Admissions was lower for students identifying as male (24%) as compared to those students identifying as female (31%).

**Table 9. 12<sup>th</sup> Grade Students Participating in Direct Admissions by Sex 2022-2023**

| Sex    | Number of Participants | Percent of Participants | Number of Students | Percent of Students | Percent of Students Participating 2022-2023 |
|--------|------------------------|-------------------------|--------------------|---------------------|---|
| Male   | 879                    | 45%                     | 3,635              | 51%                 | 24%   |
| Female | 1,068                  | 55%                     | 3,434              | 49%                 | 31%   |
| Total  | 1,947                  | 100%                    | 7,069              | 100%                | 27%   |

### Race and Ethnicity

Among first year participants, 59% identified as white, 13% as Hispanic or Latino, 12% as Black, 9% as Asian, 5% as two or more races, and 2% as American Indian or Alaskan Native (per federal definitions of American Indian and Alaskan Native) as shown in Table 10. Fewer than 10 students identified as Native Hawaiian or Pacific Islander. This distribution varies from all 12<sup>th</sup> grade students of whom 53% identified as white. The slight overrepresentation of students identifying as white compares to underrepresentation of students identifying as Hispanic or Latino (15%), Black or African American (15%), and Asian (11%). As a result, the participation rate in Direct Admissions was lower for students identifying as Hispanic or Latino (25%), Black or African American (23%), and Asian (23%) as compared to those students identifying as white (31%).

**Table 10. Students Participating in Direct Admissions by Race and Ethnicity 2022-2023**

| Race and Ethnicity                  | Number of Participants | Percent of Participants | Number of Students | Percent of Students | Percent of Students Participating 2022-2023 |
|-------------------------------------|------------------------|-------------------------|--------------------|---------------------|---|
| American Indian / Alaskan Native    | 30                     | 2%                      | 93                 | 1%                  | 32%   |
| Asian                               | 178                    | 9%                      | 773                | 11%                 | 23%   |
| Black or African American           | 240                    | 12%                     | 1063               | 15%                 | 23%   |
| Native Hawaiian or Pacific Islander | Fewer than 10          | n/a                     | n/a                | n/a                 | n/a   |
| Hispanic or Latino                  | 258                    | 13%                     | 1024               | 15%                 | 25%   |
| Two or More Races                   | 92                     | 5%                      | 380                | 5%                  | 24%   |
| White                               | 1,146                  | 59%                     | 3731               | 53%                 | 31%   |
| Total                               | 1,947                  | 100%                    | 7069               | 100%                | 27%   |

### Free or Reduced-Price Meal Benefit Eligibility

Among first year participants, 19% of 12<sup>th</sup> grade students were eligible for free or reduced-price meal benefits, and 82% as not eligible as shown in Table 11. This distribution varies slightly from all 12<sup>th</sup> grade students of whom 24% were eligible for free or reduced-price meal benefits, and 76% as not eligible. As a result, the



participation in Direct Admissions was lower for eligible students (21%) as compared to ineligible students (30%). One note of caution is that 12<sup>th</sup> graders are less likely to apply for free or reduced-priced meal benefits as compared to students in lower grades.

**Table 11. Students Participating in Direct Admissions by Free or Reduced-Price Meal Benefit Eligibility 2022-2023**

| Student was Eligible for Free or Reduced-Price Meal Benefits | Number of Participants | Percent of Participants | Number of Students | Percent of Students | Percent of Students Participating 2022-2023 |
|--|------------------------|-------------------------|--------------------|---------------------|---|
| No   | 1,587                  | 82%                     | 5,379              | 76%                 | 30%   |
| Yes  | 360                    | 18%                     | 1,690              | 24%                 | 21%   |
| Total  | 1,947                  | 100%                    | 7,069              | 100%                | 27%   |

**Filed the FAFSA**

One measure of intent to enroll in college is if a student completes the Free Application for Federal Student Aid (FAFSA) or state aid application. While not all students complete the FAFSA or state aid application, it is a requirement to be eligible for federal and state financial aid. It may also be required by the college to receive institutional grants and scholarships. Approximately 6,000 12<sup>th</sup> graders statewide or 8% of high school students entering a Minnesota college in the fall after high school graduation do not complete the FAFSA or a state aid application. To allow appropriate comparisons given the limitations discussed, data from the two preceding years was included in Table 13.

Among first year participants, 77% filed a FAFSA as compared to 51% of non-participating 12<sup>th</sup> grade students at a participating high school, as shown in Table 12. Overall, 58% of 12<sup>th</sup> grade students at a participating high school in 2022-2023 filed as FAFSA, which compares to 47% and 50% in the preceding two years as shown in Table 13.

**Table 12. 12<sup>th</sup> Grade Students at a Participating High School Filing a FAFSA 2022-2023**

| FAFSA Filing         | Number of Participants | Percent of Participants | Number of Non-Participants | Percent of Non-Participants | Number of Total Students | Percent of Total Students |
|----------------------|------------------------|-------------------------|----------------------------|-----------------------------|--------------------------|---------------------------|
| Did not File a FAFSA | 440                    | 23%                     | 2,526                      | 49%                         | 2,966                    | 42%                       |
| Filed a FAFSA        | 1,507                  | 77%                     | 2,596                      | 51%                         | 4,103                    | 58%                       |
| Total                | 1,947                  | 100%                    | 5,122                      | 100%                        | 7,069                    | 100%                      |

**Table 13. 12<sup>th</sup> Grade Students at a Participating High School Filing a FAFSA Over Time**

| Students Enrolled at a Participating High School | Did not File a FAFSA | Filed a FAFSA | Total | Percent Filing a FAFSA |
|--|----------------------|---------------|-------|------------------------|
| 2020-2021  | 3,654                | 3,240         | 6,894 | 47%                    |
| 2021-2022  | 3,451                | 3,500         | 6,951 | 50%                    |
| 2022-2023  | 2,966                | 4,103         | 7,069 | 58%                    |

**FAFSA Filing by Sex**

Among students at participating high schools, 73% of students identifying as male and participating in Direct Admissions filed a FAFSA as compared to 43% of non-participating 12<sup>th</sup> grade students identifying as male at a participating high school, as shown in Table 14. This compares to 81% of 12<sup>th</sup> grade students identifying as female and participating in Direct Admissions as compared to 59% of non-participating 12<sup>th</sup> grade students identifying as female at a participating high school

Overall, 51% of 12<sup>th</sup> grade students identifying as male at participating high school in 2022-2023 filed a FAFSA, which compares to 44% and 41% in the preceding two years, as shown in Table 15. In comparison, 66% of 12<sup>th</sup> grade students identifying as female at participating high school in 2022-2023 filed a FAFSA, which compares to 57% and 53% in the preceding two years.

**Table 14. Students at a Participating High School Filing a FAFSA 2022-2023 by Sex**

| Sex    | Direct Admissions Participant Status | Did not File a FAFSA | Filed a FAFSA | Total | Percent Filing a FAFSA |
|--------|--------------------------------------|----------------------|---------------|-------|------------------------|
| Male   | Did Not Participate                  | 1,558                | 1,198         | 2,756 | 43%                    |
| Male   | Participated                         | 236                  | 643           | 879   | 73%                    |
| Male   | Total                                | 1,794                | 1,841         | 3,635 | 51%                    |
| Female | Did Not Participate                  | 968                  | 1,398         | 2,366 | 59%                    |
| Female | Participated                         | 643                  | 864           | 1,068 | 81%                    |
| Female | Total                                | 1,611                | 2,262         | 3,434 | 66%                    |
| Total  | Did Not Participate                  | 2,526                | 2,596         | 5,122 | 51%                    |
| Total  | Participated                         | 440                  | 1,507         | 1,947 | 77%                    |
| Total  | Total                                | 2,966                | 4,103         | 7,069 | 58%                    |

**Table 15. 12<sup>th</sup> Grade Students at a Participating High School Filing a FAFSA Over Time by Sex**

| Sex  | 12 <sup>th</sup> Grade Students Enrolled | Did not File a FAFSA | Filed a FAFSA | Total | Percent Filing a FAFSA |
|------|--|----------------------|---------------|-------|------------------------|
| Male | 2020-2021                                | 2,092                | 1,468         | 3,560 | 41%                    |
| Male | 2021-2022                                | 1,985                | 1,590         | 3,575 | 44%                    |

| Sex    | 12 <sup>th</sup> Grade Students Enrolled | Did not File a FAFSA | Filed a FAFSA | Total | Percent Filing a FAFSA |
|--------|--|----------------------|---------------|-------|------------------------|
| Male   | 2022-2023                                | 1,794                | 1,841         | 3,636 | 51%                    |
| Female | 2020-2021                                | 1,562                | 1,772         | 3,334 | 53%                    |
| Female | 2021-2022                                | 1,466                | 1,910         | 3,376 | 57%                    |
| Female | 2022-2023                                | 1,172                | 2,262         | 3,434 | 66%                    |
| Total  | 2020-2021                                | 3,654                | 3,240         | 6,894 | 47%                    |
| Total  | 2021-2022                                | 3,451                | 3,500         | 6,951 | 50%                    |
| Total  | 2022-2023                                | 2,966                | 4,103         | 7,069 | 58%                    |

### FAFSA Filing by Race and Ethnicity

Among students at participating high schools, 88% of students identifying as Asian and participating in Direct Admissions filed a FAFSA, as compared to 59% of non-participating 12<sup>th</sup> grade students identifying as Asian at a participating high school as shown in Table 16. Higher completion rates were found across all race and ethnicity groups among participants as compared to non-participants. Participants identifying as white, Black or African American, two or more races or Hispanic or Latino also had FAFSA filing rates (78%, 83%, 72%, and 63% respectively) that exceeded those of their non-participating peers (56%, 51%, 47%, and 28% respectively).

Overall, 66% of 12<sup>th</sup> grade students, both participants and non-participants, identifying as Asian at participating high school in 2022-2023 filed a FAFSA, which compares to 62% and 53% in the preceding two years, as shown in Table 17. In comparison, the increase over time in FAFSA filing rates is seen for all races and ethnicity groups except for Hispanic or Latino students, for whom the rates remained stable for the last two years.

**Table 16. Students at a Participating High School Filing a FAFSA by Race and Ethnicity, 2022-2023**

| Race and Ethnicity               | Direct Admissions Participant Status | Did not File a FAFSA | Filed a FAFSA | Total | Percent Filing a FAFSA |
|----------------------------------|--------------------------------------|----------------------|---------------|-------|------------------------|
| American Indian / Alaskan Native | Did Not Participate                  | 45                   | 18            | 63    | 29%                    |
| American Indian / Alaskan Native | Participated                         | Fewer than 10        | n/a           | n/a   | n/a                    |
| American Indian / Alaskan Native | Total                                | 53                   | 40            | n/a   | 43%                    |
| Asian                            | Did Not Participate                  | 244                  | 351           | 595   | 59%                    |
| Asian                            | Participated                         | 22                   | 156           | 178   | 88%                    |
| Asian                            | Total                                | 266                  | 507           | 773   | 66%                    |
| Black or African American        | Did Not Participate                  | 406                  | 417           | 823   | 51%                    |
| Black or African American        | Participated                         | 41                   | 199           | 240   | 83%                    |
| Black or African American        | Total                                | 447                  | 616           | 1,063 | 58%                    |

| Race and Ethnicity                  | Direct Admissions Participant Status | Did not File a FAFSA | Filed a FAFSA | Total | Percent Filing a FAFSA |
|-------------------------------------|--------------------------------------|----------------------|---------------|-------|------------------------|
| Native Hawaiian or Pacific Islander | Did Not Participate                  | Fewer than 10        | n/a           | n/a   | n/a                    |
| Native Hawaiian or Pacific Islander | Participated                         | Fewer than 10        | n/a           | n/a   | n/a                    |
| Native Hawaiian or Pacific Islander | Total                                | Fewer than 10        | n/a           | n/a   | n/a                    |
| Hispanic or Latino                  | Did Not Participate                  | 548                  | 218           | 766   | 28%                    |
| Hispanic or Latino                  | Participated                         | 95                   | 163           | 258   | 63%                    |
| Hispanic or Latino                  | Total                                | 643                  | 381           | 1,024 | 37%                    |
| Two or More Races                   | Did Not Participate                  | 154                  | 134           | 288   | 47%                    |
| Two or More Races                   | Participated                         | 26                   | 66            | 92    | 72%                    |
| Two or More Races                   | Total                                | 180                  | 200           | 380   | 53%                    |
| White                               | Did Not Participate                  | 1,128                | 1,457         | 2,585 | 56%                    |
| White                               | Participated                         | 248                  | 898           | 1,146 | 78%                    |
| White                               | Total                                | 1,376                | 2,355         | 3,731 | 63%                    |
| Total                               | Did Not Participate                  | 2,526                | 2,596         | 5,122 | 51%                    |
| Total                               | Participated                         | 440                  | 1,507         | 1,947 | 77%                    |
| Total                               | Total                                | 2,966                | 4,103         | 7,069 | 58%                    |

**Table 17. 12<sup>th</sup> Grade Students at a Participating High School Filing a FAFSA Over Time by Race and Ethnicity**

| Race and Ethnicity                  | Direct Admissions Participant Status | Did not File a FAFSA | Filed a FAFSA | Total | Percent Filing a FAFSA |
|-------------------------------------|--------------------------------------|----------------------|---------------|-------|------------------------|
| American Indian / Alaskan Native    | 2020-2021                            | 77                   | 33            | 110   | 30%                    |
| American Indian / Alaskan Native    | 2021-2022                            | 72                   | 31            | 103   | 30%                    |
| American Indian / Alaskan Native    | 2022-2023                            | 53                   | 40            | 93    | 43%                    |
| Asian                               | 2020-2021                            | 343                  | 390           | 733   | 53%                    |
| Asian                               | 2021-2022                            | 271                  | 440           | 711   | 62%                    |
| Asian                               | 2022-2023                            | 266                  | 507           | 773   | 66%                    |
| Black or African American           | 2020-2021                            | 592                  | 399           | 991   | 40%                    |
| Black or African American           | 2021-2022                            | 521                  | 537           | 1058  | 51%                    |
| Black or African American           | 2022-2023                            | 447                  | 616           | 1063  | 58%                    |
| Native Hawaiian or Pacific Islander | 2020-2021                            | Fewer than 10        | n/a           | n/a   | n/a                    |
| Native Hawaiian or Pacific Islander | 2021-2022                            | Fewer than 10        | n/a           | n/a   | n/a                    |
| Native Hawaiian or Pacific Islander | 2022-2023                            | Fewer than 10        | n/a           | n/a   | n/a                    |

| Race and Ethnicity | Direct Admissions Participant Status | Did not File a FAFSA | Filed a FAFSA | Total | Percent Filing a FAFSA |
|--------------------|--------------------------------------|----------------------|---------------|-------|------------------------|
| Hispanic or Latino | 2020-2021                            | 577                  | 266           | 843   | 32%                    |
| Hispanic or Latino | 2021-2022                            | 603                  | 356           | 959   | 37%                    |
| Hispanic or Latino | 2022-2023                            | 643                  | 381           | 1024  | 37%                    |
| Two or More Races  | 2020-2021                            | 137                  | 97            | 234   | 41%                    |
| Two or More Races  | 2021-2022                            | 180                  | 159           | 339   | 47%                    |
| Two or More Races  | 2022-2023                            | 180                  | 200           | 380   | 53%                    |
| White              | 2020-2021                            | 1,926                | 2,051         | 3,977 | 52%                    |
| White              | 2021-2022                            | 1,802                | 1,976         | 3,778 | 52%                    |
| White              | 2022-2023                            | 1,376                | 2,355         | 3,731 | 63%                    |
| Total              | 2020-2021                            | 3,654                | 3,240         | 6,894 | 47%                    |
| Total              | 2021-2022                            | 3,451                | 3,500         | 6,951 | 50%                    |
| Total              | 2022-2023                            | 2,966                | 4,103         | 7,069 | 58%                    |

### FAFSA Filing by Free or Reduced-Price Meal Benefit Eligibility

Among students at participating high schools, 74% of students eligible for free or reduced-price meals and participating in Direct Admissions filed a FAFSA, as compared to 40% of non-participating 12<sup>th</sup> grade students eligible for free or reduced-price meals at a participating high school, as shown in Table 18. This compares to 78% of 12<sup>th</sup> grade students not eligible for free or reduced-price meals and participating in Direct Admissions, as compared to 54% of non-participating 12<sup>th</sup> grade students not eligible for free or reduced-price meals at a participating high school.

Both students eligible for free or reduced-price meals and those not eligible showed increases in FAFSA filing over the most recent three years. Overall, 61% of 12<sup>th</sup> grade students not eligible for free or reduced-price meals at participating high school in 2022-2023 filed a FAFSA, which compares to 54% and 51% in the preceding two years, as shown in Table 19. In comparison, 47% of 12<sup>th</sup> grade students eligible for free or reduced-price meals at participating high school in 2022-2023 filed a FAFSA, which compares to 43% and 37% in the preceding two years.

**Table 18. Students at a Participating High School Filing a FAFSA by Free or Reduced-Price Meal Benefit Eligibility, 2022-2023**

| Student was Eligible for Free/Reduced-Price Meal Benefits | Direct Admissions Participant Status | Did not File a FAFSA | Filed a FAFSA | Total | Percent Filing a FAFSA |
|---|--------------------------------------|----------------------|---------------|-------|------------------------|
| No  | Did Not Participate                  | 1,731                | 2,061         | 3,792 | 54%                    |
| No  | Participated                         | 347                  | 1,240         | 1,587 | 78%                    |
| No  | Total                                | 2,078                | 3,301         | 5,379 | 61%                    |

| Student was Eligible for Free/Reduced-Price Meal Benefits | Direct Admissions Participant Status | Did not File a FAFSA | Filed a FAFSA | Total | Percent Filing a FAFSA |
|---|--------------------------------------|----------------------|---------------|-------|------------------------|
| Yes   | Did Not Participate                  | 795                  | 535           | 1,330 | 40%                    |
| Yes   | Participated                         | 93                   | 267           | 360   | 74%                    |
| Yes   | Total                                | 888                  | 802           | 1,690 | 47%                    |

**Table 19. 12<sup>th</sup> Grade Students at a Participating High School Filing a FAFSA Over Time by Free or Reduced-Price Meal Benefit Eligibility**

| Student was Eligible for Free/Reduced-Price Meal Benefits | Direct Admissions Participant Status | Did not File a FAFSA | Filed a FAFSA | Total | Percent Filing a FAFSA |
|---|--------------------------------------|----------------------|---------------|-------|------------------------|
| No  | 2020-2021                            | 2,374                | 2,503         | 4,877 | 51%                    |
| No  | 2021-2022                            | 2,234                | 2,579         | 4,813 | 54%                    |
| No  | 2022-2023                            | 2,078                | 3,301         | 5,379 | 61%                    |
| Yes   | 2020-2021                            | 1,280                | 737           | 2,017 | 37%                    |
| Yes   | 2021-2022                            | 1,217                | 921           | 2,138 | 43%                    |
| Yes   | 2022-2023                            | 888                  | 802           | 1,690 | 47%                    |

## Enrollment in a Minnesota College in Fall after High School (Preliminary Data)

Preliminary fall enrollment in college is measured by presence of a State Grant record for the student. All Minnesota high school graduates who are Minnesota residents and whose families meet income requirements are eligible for a Minnesota State Grant if enrolling at a participating college. This number would not include students who choose to enroll in college in another state, or who enroll in college but did not apply for state financial aid using the FAFSA or state aid application. Approximately 20% of all Minnesota high school graduates enroll in college in another state. In addition, approximately 6,000 12<sup>th</sup> graders statewide or 8% of high school students entering a Minnesota college in the fall after high school graduation do not complete the FAFSA or a state aid application. To allow appropriate comparisons given the limitations discussed, data from the two preceding years was included in Table 21.

Among first year participants, 50% were found enrolled in a Minnesota college in fall after high school graduation as compared to 26% of non-participating 12<sup>th</sup> grade students at a participating high school, as shown in Table 20. Overall, 33% of 12<sup>th</sup> grade students at participating high school in 2022-2023 were found enrolled in a Minnesota college in fall after high school graduation, which compares to 31% and 28% in the preceding two years, as shown in Table 21.

**Table 20. 12<sup>th</sup> Grade Students at a Participating High School Enrolling in a Minnesota College (Preliminary Data) 2022-2023**

| Enrolled in a Minnesota College in Fall Following High School Graduation | Number of Participants | Percent of Participants | Number of Non-Participants | Percent of Non-Participants | Number of Total Students | Percent of Total Students |
|--|------------------------|-------------------------|----------------------------|-----------------------------|--------------------------|---------------------------|
| Not Found Enrolled   | 966                    | 50%                     | 3,779                      | 74%                         | 4,745                    | 67%                       |
| Found Enrolled (Preliminary)   | 981                    | 50%                     | 1,343                      | 26%                         | 2,324                    | 33%                       |
| Total  | 1,947                  | 100%                    | 5,122                      | 100%                        | 7,069                    | 100%                      |

**Table 21. Students at a Participating High School Enrolling in a Minnesota College (Preliminary Data) Over Time**

| Enrolled in a Minnesota College in Fall Following High School Graduation | Not Found Enrolled | Found Enrolled | Total | Percent Found Enrolled (Preliminary) |
|--|--------------------|----------------|-------|--------------------------------------|
| 2020-2021  | 4,964              | 1,930          | 6,894 | 28%                                  |
| 2021-2022  | 4,796              | 2,155          | 6,951 | 31%                                  |
| 2022-2023  | 4,736              | 2,333          | 7,069 | 33%                                  |

### Enrollment in a Minnesota College in Fall after High School (Preliminary Data) by Sex

Among students at participating high schools, 49% of students identifying as male and participating in Direct Admissions were found enrolled in a Minnesota college in fall after high school graduation as compared to 24% of non-participating 12<sup>th</sup> grade students identifying as male at a participating high school, as shown in Table 22. This compares to 52% of 12<sup>th</sup> grade students identifying as female and participating in Direct Admissions as compared to 29% of non-participating 12<sup>th</sup> grade students identifying as female at a participating high school

Overall, 30% of 12<sup>th</sup> grade students identifying as male at participating high school in 2022-2023 were found enrolled in a Minnesota college in fall after high school graduation, this compares to 28% and 25% in the preceding two years, as shown in Table 23. In comparison, 36% of 12<sup>th</sup> grade students identifying as female at participating high school in 2022-2023 were found enrolled in a Minnesota college in fall after high school graduation, which compares to 34% and 31% in the preceding two years.



**Table 22. Students at a Participating High School Enrolling in a Minnesota College (Preliminary Data) by Sex 2022-2023**

| Sex    | Direct Admissions Participant Status | Not Found Enrolled | Found Enrolled (Preliminary) | Total | Percent Enrolled in a Minnesota College in Fall Following High School Graduation |
|--------|--------------------------------------|--------------------|------------------------------|-------|--|
| Male   | Did Not Participate                  | 2,102              | 654                          | 2,756 | 24%  |
| Male   | Participated                         | 450                | 429                          | 879   | 49%  |
| Male   | Total                                | 2,552              | 1,083                        | 3,635 | 30%  |
| Female | Did Not Participate                  | 1,677              | 689                          | 2,366 | 29%  |
| Female | Participated                         | 516                | 552                          | 1,068 | 52%  |
| Female | Total                                | 2,193              | 1,241                        | 3,434 | 36%  |

**Table 23. 12<sup>th</sup> Grade Students at a Participating High School Enrolling in a Minnesota College (Preliminary Data) Over Time by Sex**

| Sex    | 12 <sup>th</sup> Grade Students Enrolled | Not Found Enrolled | Found Enrolled (Preliminary) | Total | Percent Enrolled in a Minnesota College in Fall Following High School Graduation |
|--------|--|--------------------|------------------------------|-------|--|
| Male   | 2020-2021                                | 2,673              | 887                          | 3,560 | 25%  |
| Male   | 2021-2022                                | 2,584              | 991                          | 3,575 | 28%  |
| Male   | 2022-2023                                | 2,552              | 1,083                        | 3,635 | 30%  |
| Female | 2020-2021                                | 2,287              | 1,047                        | 3,334 | 31%  |
| Female | 2021-2022                                | 2,227              | 1,149                        | 3,376 | 34%  |
| Female | 2022-2023                                | 2,193              | 1,241                        | 3,434 | 36%  |

### **Enrollment in a Minnesota College in Fall after High School (Preliminary Data) by Race and Ethnicity**

Among students at participating high schools, 60% of students identifying as Asian and participating in Direct Admissions were found enrolled in a Minnesota college in fall after high school graduation as compared to 37% of non-participating 12<sup>th</sup> grade students identifying as Asian at a participating high school, as shown in Table 24. Higher preliminary enrollment rates were found across all race and ethnicity groups among participants as compared to non-participants. Participants identifying as white, Black or African American, two or more races or Hispanic or Latino also had preliminary enrollment rates (48%, 64%, 41%, and 46% respectively) that exceeded those of their non-participating peers (25%, 34%, 23%, and 15% respectively).

**Table 24. Students at a Participating High School Enrolling in a Minnesota College (Preliminary Data) by Race and Ethnicity, 2022-2023**

| Race and Ethnicity                  | Direct Admissions Participant Status | Not Found Enrolled | Found Enrolled (Preliminary) | Total | Percent Enrolled in a Minnesota College in Fall Following High School Graduation |
|-------------------------------------|--------------------------------------|--------------------|------------------------------|-------|--|
| American Indian / Alaskan Native    | Did Not Participate                  | 50                 | 13                           | 63    | 21%  |
| American Indian / Alaskan Native    | Participated                         | 20                 | 10                           | 30    | 33%  |
| American Indian / Alaskan Native    | Total                                | 70                 | 23                           | 93    | 25%  |
| Asian                               | Did Not Participate                  | 372                | 223                          | 595   | 37%  |
| Asian                               | Participated                         | 72                 | 106                          | 178   | 60%  |
| Asian                               | Total                                | 444                | 329                          | 773   | 43%  |
| Black or African American           | Did Not Participate                  | 547                | 276                          | 823   | 34%  |
| Black or African American           | Participated                         | 87                 | 153                          | 240   | 64%  |
| Black or African American           | Total                                | 634                | 429                          | 1,063 | 40%  |
| Native Hawaiian or Pacific Islander | Did Not Participate                  | Fewer than 10      | n/a                          | n/a   | n/a  |
| Native Hawaiian or Pacific Islander | Participated                         | Fewer than 10      | n/a                          | n/a   | n/a  |
| Native Hawaiian or Pacific Islander | Total                                | Fewer than 10      | n/a                          | n/a   | n/a  |
| Hispanic or Latino                  | Did Not Participate                  | 652                | 114                          | 766   | 15%  |
| Hispanic or Latino                  | Participated                         | 140                | 118                          | 258   | 46%  |
| Hispanic or Latino                  | Total                                | 792                | 232                          | 1,024 | 23%  |
| Two or More Races                   | Did Not Participate                  | 221                | 67                           | 288   | 23%  |
| Two or More Races                   | Participated                         | 54                 | 38                           | 92    | 41%  |
| Two or More Races                   | Total                                | 275                | 105                          | 380   | 28%  |
| White                               | Did Not Participate                  | 1,936              | 649                          | 2,585 | 25%  |
| White                               | Participated                         | 593                | 553                          | 1,146 | 48%  |
| White                               | Total                                | 2,529              | 1,202                        | 3,731 | 32%  |
| Total                               | Did Not Participate                  | 3,779              | 1,343                        | 5,122 | 26%  |
| Total                               | Participated                         | 966                | 981                          | 1,947 | 50%  |
| Total                               | Total                                | 4,745              | 2,324                        | 7,069 | 33%  |

Overall, 40% of 12<sup>th</sup> grade students, both participants and non-participants, identifying as Black or African American at participating high school in 2022-2023 were found enrolled in a Minnesota college in fall after high school graduation, which compares to 38% and 30% in the preceding two years, as shown in Table 25. In comparison, the increase over time in preliminary enrollment rates is seen for all races and ethnicity groups

except students identifying as Asian for whom the rates remained stable for the last two years and for students identifying as Hispanic or Latino for whom the rate declined slightly.

**Table 25. 12<sup>th</sup> Grade Students at a Participating High School Enrolling in a Minnesota College (Preliminary Data) Over Time by Race and Ethnicity**

| Race and Ethnicity                  | Direct Admissions Participant Status | Not Found Enrolled | Found Enrolled (Preliminary) | Total | Percent Enrolled in a Minnesota College in Fall Following High School Graduation |
|-------------------------------------|--------------------------------------|--------------------|------------------------------|-------|--|
| American Indian / Alaskan Native    | 2020-2021                            | 89                 | 21                           | 110   | 19%  |
| American Indian / Alaskan Native    | 2021-2022                            | 79                 | 24                           | 103   | 23%  |
| American Indian / Alaskan Native    | 2022-2023                            | 70                 | 23                           | 93    | 25%  |
| Asian                               | 2020-2021                            | 451                | 282                          | 733   | 38%  |
| Asian                               | 2021-2022                            | 407                | 304                          | 711   | 43%  |
| Asian                               | 2022-2023                            | 444                | 329                          | 773   | 43%  |
| Black or African American           | 2020-2021                            | 697                | 294                          | 991   | 30%  |
| Black or African American           | 2021-2022                            | 651                | 407                          | 1,058 | 38%  |
| Black or African American           | 2022-2023                            | 634                | 429                          | 1,063 | 40%  |
| Native Hawaiian or Pacific Islander | 2020-2021                            | Fewer than 10      | n/a                          | n/a   | n/a  |
| Native Hawaiian or Pacific Islander | 2021-2022                            | Fewer than 10      | n/a                          | n/a   | n/a  |
| Native Hawaiian or Pacific Islander | 2022-2023                            | Fewer than 10      | n/a                          | n/a   | n/a  |
| Hispanic or Latino                  | 2020-2021                            | 652                | 191                          | 843   | 23%  |
| Hispanic or Latino                  | 2021-2022                            | 707                | 252                          | 959   | 26%  |
| Hispanic or Latino                  | 2022-2023                            | 792                | 232                          | 1,024 | 23%  |
| Two or More Races                   | 2020-2021                            | 179                | 55                           | 234   | 24%  |
| Two or More Races                   | 2021-2022                            | 254                | 85                           | 339   | 25%  |
| Two or More Races                   | 2022-2023                            | 275                | 105                          | 380   | 28%  |
| White                               | 2020-2021                            | 2,890              | 1,087                        | 3,977 | 27%  |
| White                               | 2021-2022                            | 2,711              | 1,067                        | 3,778 | 28%  |
| White                               | 2022-2023                            | 2,529              | 1,202                        | 3,731 | 32%  |
| Total                               | 2020-2021                            | 4,960              | 1,934                        | 6,894 | 28%  |
| Total                               | 2021-2022                            | 4,811              | 2,140                        | 6,951 | 31%  |
| Total                               | 2022-2023                            | 4,745              | 2,324                        | 7,069 | 33%  |

**Enrollment in a Minnesota College in Fall after High School (Preliminary Data) by Free or Reduced-Price Meal Benefit Eligibility**

Among students at participating high schools, 53% of students eligible for free or reduced-price meals and participating in Direct Admissions were found enrolled in a Minnesota college in fall after high school graduation as compared to 25% of non-participating 12<sup>th</sup> grade students eligible for free or reduced-price meals at a participating high school, as shown in Table 26. This compares to 50% of 12<sup>th</sup> grade students not eligible for free or reduced-price meals and participating in Direct Admissions as compared to 27% of non-participating 12<sup>th</sup> grade students not eligible for free or reduced-price meals at a participating high school.

Both students eligible for free or reduced-price meals and those not eligible showed increases in preliminary enrollment over the most recent three years. Overall, 34% of 12<sup>th</sup> grade students not eligible for free or reduced-price meals at participating high school in 2022-2023 filed a2 FAFSA, which compares to 31% and 28% in the preceding two years, as shown in Table 27. In comparison, 31% of 12<sup>th</sup> grade students eligible for free or reduced-price meals at participating high school in 2022-2023 were found enrolled in a Minnesota college in fall after high school graduation, which compares to 31% and 27% in the preceding two years.

**Table 26. Students at a Participating High School Enrolling in a Minnesota College (Preliminary Data) by Free or Reduced-Price Meal Benefit Eligibility, 2022-2023**

| Student was Eligible for Free/Reduced-Price Meal Benefits | Direct Admissions Participant Status | Not Found Enrolled | Found Enrolled (Preliminary) | Total | Percent Enrolled in a Minnesota College in Fall Following High School Graduation |
|---|--------------------------------------|--------------------|------------------------------|-------|--|
| No  | Did Not Participate                  | 2,776              | 1,016                        | 3,792 | 27%  |
| No  | Participated                         | 795                | 792                          | 1,587 | 50%  |
| No  | Total                                | 3,571              | 1,808                        | 5,379 | 34%  |
| Yes   | Did Not Participate                  | 1,003              | 327                          | 1,330 | 25%  |
| Yes   | Participated                         | 171                | 189                          | 360   | 53%  |
| Yes   | Total                                | 1,174              | 516                          | 1,690 | 31%  |
| Total   | Did Not Participate                  | 3,779              | 1,343                        | 5,122 | 26%  |
| Total   | Participated                         | 966                | 981                          | 1,947 | 50%  |
| Total   | Total                                | 4,745              | 2,324                        | 7,069 | 33%  |

**Table 27. 12<sup>th</sup> Grade Students at a Participating High School Enrolling in a Minnesota College (Preliminary Data) Over Time by Free or Reduced-Price Meal Benefit Eligibility**

| Student was Eligible for Free/Reduced-Price Meal Benefits | Direct Admissions Participant Status | Not Found Enrolled | Found Enrolled (Preliminary) | Total | Percent Enrolled in a Minnesota College in Fall Following High School Graduation |
|---|--------------------------------------|--------------------|------------------------------|-------|--|
| No  | 2020-2021                            | 3,491              | 1,386                        | 4,877 | 28%  |
| No  | 2021-2022                            | 3,343              | 1,470                        | 4,813 | 31%  |
| No  | 2022-2023                            | 3,571              | 1,808                        | 5,379 | 34%  |

| Student was Eligible for Free/Reduced-Price Meal Benefits | Direct Admissions Participant Status | Not Found Enrolled | Found Enrolled (Preliminary) | Total | Percent Enrolled in a Minnesota College in Fall Following High School Graduation |
|---|--------------------------------------|--------------------|------------------------------|-------|--|
| Yes   | 2020-2021                            | 1,469              | 548                          | 2,017 | 27%  |
| Yes   | 2021-2022                            | 1,468              | 670                          | 2,138 | 31%  |
| Yes   | 2022-2023                            | 1,174              | 516                          | 1,690 | 31%  |
| Total   | 2020-2021                            | 4,960              | 1,934                        | 6,894 | 28%  |
| Total   | 2021-2022                            | 4,811              | 2,140                        | 6,951 | 31%  |
| Total   | 2022-2023                            | 4,745              | 2,324                        | 7,069 | 33%  |

## Future Research

Additional data elements will be added as the identified data sources are made available to OHE for use in evaluating Direct Admissions. These future additional indicators will include:

- the high school completion rate of seniors (indirect outcome),
- the immediate college enrollment rate of seniors (final data), and
- the immediate in-state college enrollment rate of seniors (final data).

In addition, OHE will add information disaggregated by English language learner status, school and district, and geography when possible and appropriate. In addition, a full program evaluation will be undertaken by external researchers in collaboration with the State Higher Education Executive Officers (SHEEO), which is assisting numerous states including Minnesota, Idaho, and Hawaii in evaluating its Direct Admissions efforts.

## Challenges and Recommendations

---

The Successes of the 2023-2034 program year reflect sustained, engaged, and collaborative work led by OHE and our key collaborators. The year was not without its challenges, which primarily occurred in four areas: administration, communications with students, technology, and fidelity of implementation.

### Administration

One of the greatest challenges in administering the program is K-12 staffing. Direct Admissions is not an expensive program to administer, but its success relies on high school counselors and related staff finding approximately 40 to 80 additional hours to set up and execute the program at the local level. Implementation of Direct Admissions requires that high schools complete their assessment of students' on-track for graduation status, and the assignment of each student to an academic tier between June and early September. In addition, staff ensure FERPA notifications/Tennessee warnings are sent to families prior to testing and calibrating the software used in notifying students. Given that most staff are contracted through June of the academic calendar year, and then do not return until August, this adds work to the end of the school year or immediately at the beginning of the next. For schools with limited staffing, finding the extra hours needed can be a challenge. Schools have the option of contracting for work in July but not all staff are available. Funding provided by the state could be utilized for reimbursing schools for the extra hours required of staff. Once a school has completed its first year in the program, the need for staff time is reduced in subsequent years as set-up tasks only need to be maintained, particularly if done within the SIS. However, hours are still required to complete their assessment of students' on-track for graduation status, and the assignment of each student to an academic tier. In addition, key staff unplanned outages or turnover set back a few schools or districts that were otherwise initially on track to meet the preferred October send timeline.

In addition to staffing bandwidth and program needs, given the richness and variety of secondary schools across the state, another administrative challenge is inconsistent implementation at the school level which led to occasional challenges and unexpected situations. This included schools still using Pass/No Pass grades; high schools governed by boards requiring "opt-in" policies; and more. In each of these instances, this led to delays in students receiving their Direct Admissions letter.

A final administrative challenge was delays in completing the necessary contractual documents to allow for data sharing and fund transfers. Both Joint Powers and Data Sharing Agreements are needed to ensure secure data transfer and compliance are met, in addition to remuneration for program costs. For this year, four high schools were discontinued as they did not have the contractual obligations in place to fulfill the program's promise. The sheer number and volume of contracts for the program also merit a great deal of agency time. Streamlining these processes will be critical as the program scales.

### Communications with Students

The success of Direct Admissions relies on strategically timed communication with students and their parents. In this area, several challenges occurred, largely around getting the Direct Admissions letters and information to

students in the early fall. Numerous web-based, print, and social media assets were created and translated to support the initial Direct Admissions communication to students. In spite of these tools, and even with program staff support, a number of high schools and districts were late in getting their communications out to students prior to the end of October. This was largely due to understanding the technology involved in sending out initial communications. Sometimes this was due to ignorance around SIS updates, and other times, loss of key staff in technology or communications' areas of the secondary schools themselves.

A second communication challenge that remains in spite of this year's efforts is ensuring that students understand what their next steps should be after initial communications are sent. Behavioral "nudging" of students to act on colleges of choice remains key. Overall, the agency has started to build out better brand awareness and is thinking of expanding program outreach and resources to earlier grades, particularly with tools around types of participating higher education institutions and ways to pay for college. This year, the most successful high schools leveraged every channel available to them, including print and social media; advisory meetings for seniors; press releases; and more.

There's also more work to do in collaborating on the college side of communications with students. High school staff have requested that communications following the initial notification be standardized on a set timeline (e.g., prompts 3-5 days after sending the initial notification). Students were confused about institution-specific next steps, ranging from applying for free to the college with a promo code to confirming their data in a college-specific portal. On the college side of communications with students, there is a clear need to build out more resources to aid students and families in understanding the program and its nuances across institutions. As such, the agency has already started working on building a toolkit for our postsecondary partners in the upcoming program year.

## Technology

Direct Admissions uses local SIS platforms and data sharing agreements with high schools and districts to assess and share the data needed to ensure students get their program survey notifications in a timely fashion. The success of the program is dependent on high schools having implemented and being aware of information and processes within their local SIS technology to complete the academic review and send notifications to students. Without the ability to produce these reports, technology workarounds and manual review are needed at the high school. Thus, another anticipated challenge is for the Office of Higher Education to onboard and create additional training manuals for the remaining SIS vendors to Direct Admissions who will be rolling out the program in the next school year. This set-up can be quite substantial at the outset as there are multiple steps involved. First, a school must assess if the student is on-track for graduation through the academic planner tool. The academic planner details the graduation requirements for the district, the courses that meet those requirements, and the student's course enrollments and grade information. Once set up, on-track for graduation is assessed via a report. Next is the assignment to academic tiers for Direct Admissions. The system should have a pre-programmed report that reviews the students unweighted cumulative GPA and course grades in English, math, and science to assign the academic tiers. Both of these reports are then reviewed and quality assured by counselors for accuracy and student placement. Without the ability to produce these reports, high school counselors must manually review the on-track for graduation status, likely in an Excel spreadsheet, and manually



review the unweighted grade point average and course grades to assign tiers. The manual review process increases the time needed for staff to set-up the program prior to the start of each academic year. At the moment, two of the five MDE-approved SIS vendors have built Direct Admissions into their technology platforms. A third has begun production. The remaining two have been engaged in dialogue with the agency.

## Fidelity of Implementation

The final area of program challenges involves fidelity of implementation. For Direct Admissions to be successful, it is critical that the program provide information to the student as soon as possible once the student begins their senior year. Ideally, seniors in the 2023-2024 academic year should have received their Direct Admissions notifications between August and October, depending on the school. In reality, these notifications were sometimes delayed when schools were not able to complete set up tasks during the summer. Additionally, several schools did not complete the initial contractual steps, and several more failed to implement the sending of communications altogether in 2023. A goal for future years will be to ensure that all notifications are sent to students and parents by October 31<sup>st</sup> at the latest to take full advantage of program benefits (including application fee waivers and connecting to college staff early in senior year), building upon College Knowledge month momentum in October. This also ensures that students have the program information prior to participating in events planned at or by their school in early fall.

An additional challenge in this area is that pandemic related grading policies have resulted in cumulative grade point averages that could not be used accurately in the existing Direct Admissions tier system. Specifically, the use of “No Pass, No Credit” and “Pass” grades in calculating the student’s unweighted cumulative GPA requires high school counselors to calculate a specific “Direct Admissions GPA”. If high schools used a “No Pass, No Credit” grade in place of “F” and a “Pass” grade in place of “D” or “C” grades during the 2020-2021, 2021-2022, and/or 2022-2023 academic years, the unweighted cumulative GPA would have been calculated by only using “A” and “B” letter grades. This would result in an unweighted GPA of 3.0 or higher for all students and not accurately reflect the student’s academic performance for college admissions’ purposes. This issue should fade over time as the policies have largely been reversed since the pandemic’s ebbing, but still played a feature in several schools and districts this year.

## Recommendations

The challenges discussed in the prior section are not insurmountable, and with planning and assistance from K-12 staff, SIS technology vendors, and postsecondary partners, OHE anticipates evolving Direct Admissions into a more effective and successful program each year. Recommendations to address these challenges include the following:

- Double the number of participating high schools to around 200 in 2024-2025, and explore incorporating private/parochial high schools;
- Work with new schools earlier in the year to ensure key benchmarks and deliverables are met for initial program set-up prior to November 1st;

- Work with schools to ensure full use of existing SIS technology to support Direct Admissions, including on-boarding additional SIS vendors and leveraging manuals and supplemental tools to actualize the program;
- Continue to standardize student communications and communication timelines with regards to initial prompts for follow-up at specified times from high school staff; initial contact from colleges; and integrated follow-up messaging with FAFSA, MN DREAM Act, Pell Grant, State Grant information;
- Expand upon and create new marketing content. Such content and assets are already in development, ranging from student testimonials to companion toolkits for students and families and college partners. Emphasis will also be given to sharing the program with younger audiences in 9<sup>th</sup> and 10<sup>th</sup> grades;
- Create communities of practice for secondary partners that support the work and allow for organic best practices' sharing. These communities can also serve as a "mentor program" for newly joining high schools to connect with veteran high school participants;
- Integrate more intentional crossover time between the two working advisory groups, in addition to a few optional all-participant virtual gatherings throughout fall months;
- In terms of prospective program partners, continue to expand to include longstanding community-based college-access organizations (CBOs), hopefully including: Get Ready, Achieve, and MN TRIO (and, more particularly, Upward Bound and Educational Talent Search programs);
- For calendar outreach events and avenues (both virtual and off-site), establish an OHE Direct Admissions' presence and brand-awareness at the following hallmarks of the admissions' calendar year: the Minnesota State Fair; the fall's Minnesota School Counselors Association annual conference; Minnesota's National College Fair in October; the Minnesota Association for College Admissions Counseling's fall and spring Minnesota Education Fairs; and the Minnesota Association for Counselors of Color fall and spring college fairs;
- Collaborate with the Minnesota Department of Education in College Knowledge Month/Minnesota Goes to College Efforts throughout October.

## Scaling Direct Admissions Statewide

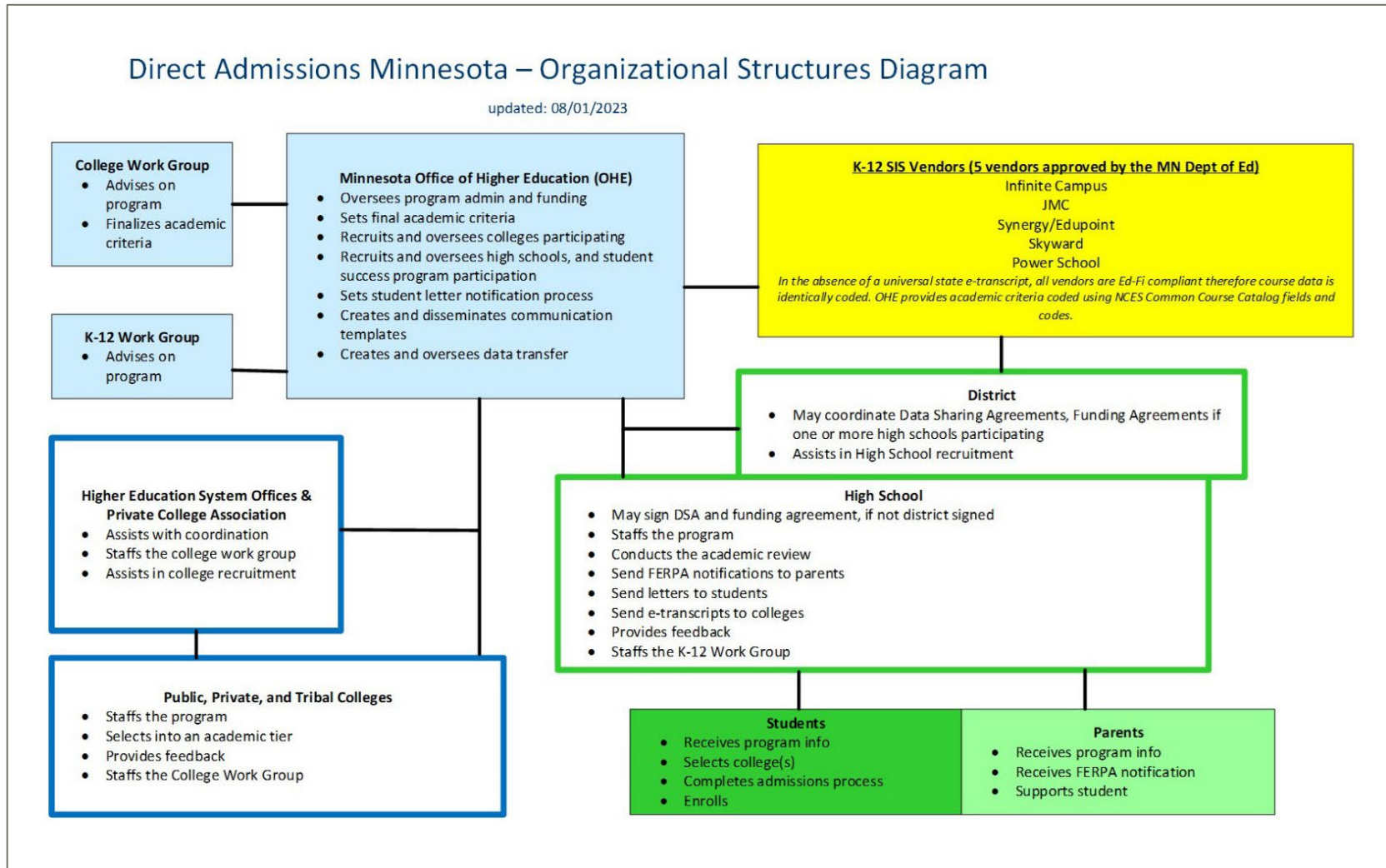
It is possible to scale Direct Admissions to all 800 of Minnesota's public high schools (approximately 70,000 high school seniors). The Office of Higher Education recommends scaling the program over three to five years to all high schools due to the set-up work required, and maintaining it as a voluntary program for schools to opt into.

## Next Report

The next report on Direct Admissions Minnesota is due to the Legislature by February 1, 2025.

# Appendix A. Direct Admissions' Participating High Schools, Community-based Partner Direct Service High Schools, and Colleges' Tables

Figure A1. Direct Admissions Minnesota – Organizational Structures Diagram 2023-2024



The organizational structure of the Direct Admissions program shows how each stakeholder group plays a key role in the implementation of the program. Each section of the diagram includes the organization, working group, school, or partner within the program and lists the roles that each are responsible for.

The Minnesota Office of Higher Education:

- Oversees program administration and funding
- Sets final academic criteria
- Recruits and oversees colleges participating
- Recruits and oversees high schools, and student success program participation
- Sets student letter notification process
- Creates and disseminates communication templates
- Creates and oversees data transfer.

OHE partners with two work groups comprised of member partners from each sector, the College Work Group and K-12 Work Group, to gather recommendations, feedback and decisions for program implementation to OHE.

The College Work Group:

- Advises on program
- Finalizes academic criteria

The K-12 Work Group:

- Advises on program

Local School Information System (SIS) platforms, which includes Infinite Campus, jmc, Synergy/Edupoint, Skyward, and PowerSchool are five vendors approved by the Minnesota Department of Education. The SIS platforms are used to streamline academic review of students at participating high schools. In the absence of a universal state e-transcript, all vendors are Ed-Fi compliant, therefore course data is identically coded. OHE provides academic criteria coded using NCES Common Course Catalog fields and codes.

OHE works closely with school districts and high schools to coordinate necessary Data Sharing and Joint Powers contractual agreements; staffing and coordinating the program's FERPA notification to families, the academic review and letter notification processes; following up with colleges and universities on behalf of students regarding transcripts or additional admissions' materials requests; and providing feedback to OHE.

School districts:

- May coordinate Data Sharing Agreements and funding agreements if one or more high school is participating
- Assist in high school recruitment

#### High schools:

- May sign Data Sharing Agreement (DSA) and funding agreement, if not district signed
- Staffs the program
- Conducts the academic review
- Sends FERPA notification to parents
- Sends letters to students
- Sends e-transcripts to colleges
- Provides feedback
- Staffs the K-12 Work Group

Public, tribal, and private colleges, universities, and higher education system offices promote new membership and support existent institutions in the work.

#### The Higher Education System Offices and Private College Association:

- Assists with coordination
- Staffs the college work group
- Assists in college recruitment

#### Public, Private and Tribal Colleges:

- Staffs the program
- Selects into an academic tier
- Provides feedback
- Staffs the College Work Group

All the above is to the benefit of students and families, who receive the program notifications and letter surveys; select colleges and universities of choice; and complete any necessary admissions requirements prior to ultimately enrolling in an institution of choice.

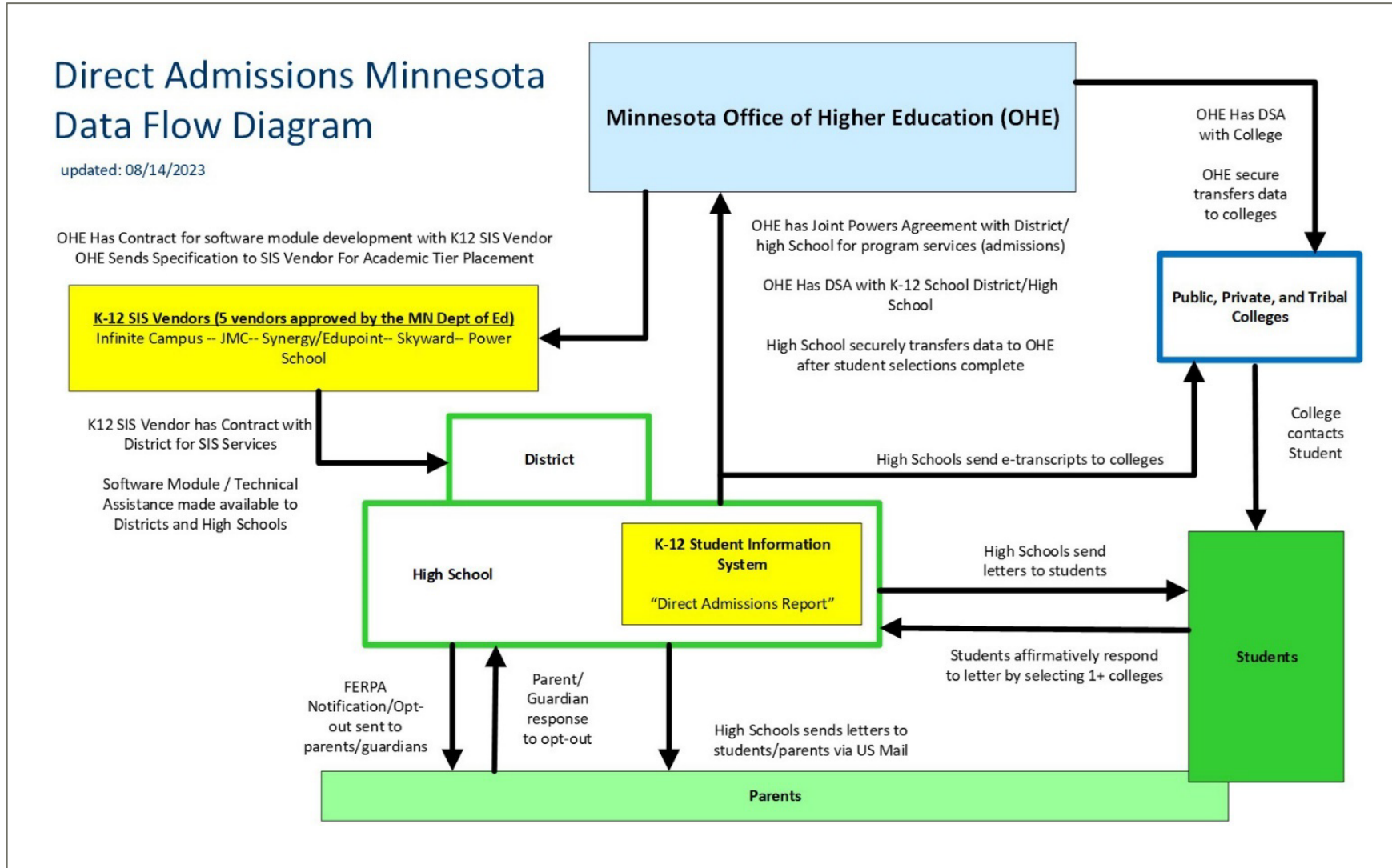
#### Students:

- Receive the program info
- Selects college(s)
- Completes admissions process
- Enrolls

#### Parents:

- Receives program info
- Receives FERPA notification
- Supports student

Figure A2. Direct Admissions Minnesota – Data Flow Diagram 2023-2024



The data flow diagram of the Direct Admissions program displays the data and communication transitions between the various program partners. The data flow diagram begins with the Minnesota Office of Higher Education.

OHE has contracts in place for software module development with several of the K-12 SIS vendors (Infinite Campus, jmc, Synergy/Edupoint, Skyward, and PowerSchool), who service the participating high schools and districts in utilizing the local platform and providing technical support.

- K-12 SIS vendors have a contract with district for SIS services.
- Software module/technical assistance is made available to districts and high schools.

Districts and high schools use local technology to generate a FERPA notification to families to opt-out of the program, who may choose to not participate. Following this notification, districts and high schools use their local SIS platform to produce a Direct Admissions report in conducting the academic review for student tier placement; generate the student survey notification via their communication modality of choice (email, letter, etc.).

High school sends letters to students and parents via U.S. mail, and students are encouraged to respond within the platform or technology being utilized to select institution(s) of preference. This data is transferred back to the high school’s SIS, which will inform OHE of students’ selections.

- OHE has Joint Powers Agreement with district/high school for program services (admissions)
- OHE has Data Sharing Agreement (DSA) with K-12 school district/high school
- High school securely transfers data to OHE after student selections complete

OHE has DSAs with participating public, private and tribal colleges and securely transfers the data to the colleges. Public, tribal, and private colleges and universities securely retrieve transferred student data in a timely manner.

- Districts and high schools use local technologies to send transcripts or work with students in submitting additional admissions’ materials requested to selected public, private and tribal colleges.
- The colleges and universities then contact students through local communication and follow-up efforts regarding any specific next steps or applications needs.

**Table A1. Members of K-12 Secondary Advisory Workgroup of Direct Admissions**

| Member         | Affiliation                         |
|----------------|-------------------------------------|
| Joshua Omang   | Detroit Lakes Senior High           |
| Kim Esso       | Highland Park Senior High School    |
| Samina Ali     | Johnson High School                 |
| Emily Owens    | Venture Academy High School         |
| Brooke McGuire | Waseca Public Schools               |
| Eric Gordee    | Infinite Campus                     |
| Tiffany Gustin | Minnesota School Boards Association |

| Member          | Affiliation   |
|-----------------|---|
| Beth Barsness   | Minnesota Department of Education                         |
| Patrick Milton  | Get Ready Program, Office of Higher Education             |
| Meredith Fergus | Research, Office of Higher Education                      |
| Sally Krager    | Research, Office of Higher Education                      |
| Sarah Burghardt | Marketing and Communications, Office of Higher Education  |
| Wendy Robinson  | Assistant Commissioner, Office of Higher Education        |
| Aaron Salasek   | Direct Admissions Coordinator, Office of Higher Education |

**Table A2. Members of Postsecondary Advisory Workgroup of Direct Admissions**

| Member             | Affiliation   |
|--------------------|---|
| Robert Gould       | Augsburg University   |
| Stephanie Ruckel   | Augsburg University   |
| Jeff Lemke         | Bethany Lutheran College  |
| Kristen Hatfield   | University of Saint Thomas  |
| John Manning       | Minnesota Private College Council                                   |
| Alison Groebner    | Minnesota Private College Council                                   |
| Cynthia Olson      | Dunwoody College of Technology                                      |
| Jennifer Hewerdine | Ridgewater College  |
| Gabby Miller       | Saint Paul College  |
| Tia Miles          | Bemidji State University  |
| John Brown         | Saint Cloud State University  |
| Tania Schmidt      | Winona State University   |
| Chris Halling      | MN-State System Office  |
| Sue Erickson       | University of Minnesota Crookston                                   |
| Melissa Bert       | University of Minnesota Morris                                      |
| Brian Studebaker   | University of Minnesota Morris                                      |
| Keri Zweig Ristic  | University of Minnesota Twin Cities                                 |
| Meredith Fergus    | Research, Minnesota Office of Higher Education                      |
| Sally Krager       | Research, Minnesota Office of Higher Education                      |
| Wendy Robinson     | Assistant Commissioner, Minnesota Office of Higher Education        |
| Aaron Salasek      | Direct Admissions Coordinator, Minnesota Office of Higher Education |

**Table A3. Participating High Schools for 2023-2024  
(County Indicated, Alpha Order by High School)**

| County Name | School Name                            | Direct Admissions Status |
|-------------|--|--------------------------|
| Ramsey      | 622 Online High School                 | Participating 2023-2024  |
| Ramsey      | A. G. A. P. E. Teen Parent High School | Participating 2023-2024  |



| County Name | School Name                           | Direct Admissions Status                  |
|-------------|---------------------------------------|---|
| Saint Louis | Academic Excellence Online            | Deferred start to 2024-2025 before launch |
| Freeborn    | Albert Lea Senior High School         | Participating 2023-2024                   |
| Ramsey      | ALC Gateway to College                | Participating 2023-2024                   |
| Freeborn    | Alden-Conger Secondary                | Deferred start to 2024-2025 before launch |
| Stearns     | Apollo Senior High School             | Participating 2023-2024                   |
| Mower       | Austin Online Academy                 | Participating 2023-2024                   |
| Mower       | Austin Senior High School             | Participating 2023-2024                   |
| Hennepin    | Banaadir Academy                      | Participating 2023-2024                   |
| Clay        | Barnesville Secondary                 | Participating 2023-2024                   |
| Faribault   | Blue Earth Area Secondary             | Participating 2023-2024                   |
| Douglas     | Brandon-Evansville High School        | Participating 2023-2024                   |
| Hennepin    | Brooklyn Center Early College Academy | Participating 2023-2024                   |
| Hennepin    | Brooklyn Center High School           | Participating 2023-2024                   |
| Wright      | Buffalo Senior High School            | Participating 2023-2024                   |
| Goodhue     | Cannon Falls Secondary                | Participating 2023-2024                   |
| Anoka       | Centennial High School                | Deferred start to 2024-2025 before launch |
| Ramsey      | Central Senior High School            | Participating 2023-2024                   |
| Olmsted     | Century Senior High School            | Participating 2023-2024                   |
| Carver      | Chanhassen High School                | Participating 2023-2024                   |
| Carver      | Chaska High School                    | Participating 2023-2024                   |
| Clearwater  | Clearbrook-Gonvick Secondary          | Participating 2023-2024                   |
| Carlton     | Cloquet Senior High School            | Participating 2023-2024                   |
| Ramsey      | Como Park Senior High School          | Participating 2023-2024                   |
| Ramsey      | Creative Arts Secondary School        | Participating 2023-2024                   |
| Hennepin    | CVA Fusion High School                | Participating 2023-2024                   |
| Hennepin    | CVA PASCAL Middle & High School       | Participating 2023-2024                   |
| Saint Louis | Denfeld High School                   | Deferred start to 2024-2025 before launch |
| Becker      | Detroit Lakes Senior High School      | Participating 2023-2024                   |
| Saint Louis | Duluth Area Learning Center           | Deferred start to 2024-2025 before launch |
| Polk        | East Grand Forks Senior High School   | Deferred start to 2024-2025 before launch |
| Saint Louis | East High School                      | Deferred start to 2024-2025 before launch |
| Washington  | East Ridge High School                | Participating 2023-2024                   |
| Hennepin    | Eden Prairie Senior High School       | Participating 2023-2024                   |
| Hennepin    | Edina Senior High School              | Participating 2023-2024                   |
| Hennepin    | Edison High School                    | Participating 2023-2024                   |
| Hennepin    | FAIR High School                      | Participating 2023-2024                   |
| Ramsey      | Fairview Alternative High School      | Deferred start to 2024-2025 before launch |
| Rice        | Faribault Senior High School          | Participating 2023-2024                   |
| Polk        | Fertile-Beltrami Secondary            | Deferred start to 2024-2025 before launch |
| Sibley      | GFW High School School                | Participating 2023-2024                   |
| Goodhue     | Goodhue Secondary                     | Participating 2023-2024                   |
| Ramsey      | Gordon Parks High School              | Participating 2023-2024                   |

| County Name | School Name                                       | Direct Admissions Status                          |
|-------------|---|---|
| Ramsey      | Harding Senior High School                        | Participating 2023-2024                           |
| Hennepin    | Harrison Education Center                         | District Deferred start to 2024-2025 after launch |
| Clay        | Hawley Secondary                                  | Participating 2023-2024                           |
| Otter Tail  | Henning Secondary                                 | Participating 2023-2024                           |
| Hennepin    | Heritage Academy High School                      | Participating 2023-2024                           |
| Ramsey      | Highland Park Senior High                         | Participating 2023-2024                           |
| Ramsey      | Hmong College Prep Academy High School            | Participating 2023-2024                           |
| Hennepin    | Hopkins Senior High                               | Participating 2023-2024                           |
| Houston     | Houston Secondary                                 | Deferred start to 2024-2025 before launch         |
| Ramsey      | Humboldt High School                              | Participating 2023-2024                           |
| Hennepin    | Insight School of Minnesota                       | Participating 2023-2024                           |
| Carver      | Integrated Arts Academy                           | Participating 2023-2024                           |
| Hennepin    | Jefferson Senior High School                      | Participating 2023-2024                           |
| Olmsted     | John Marshall Senior High School                  | Participating 2023-2024                           |
| Ramsey      | Johnson Senior High School                        | Participating 2023-2024                           |
| Scott       | Jordan High School                                | Participating 2023-2024                           |
| Hennepin    | Kennedy Senior High (Bloomington)                 | Participating 2023-2024                           |
| Otter Tail  | Kennedy High School (Fergus Falls)                | Participating 2023-2024                           |
| Washington  | Lakes International Language Academy Upper School | Participating 2023-2024                           |
| Ramsey      | LEAP High School                                  | Participating 2023-2024                           |
| Winona      | Lewiston-Altura Secondary                         | Participating 2023-2024                           |
| Blue Earth  | Mankato East Senior High School                   | Participating 2023-2024                           |
| Blue Earth  | Mankato West Senior High School                   | Participating 2023-2024                           |
| Blue Earth  | Maple River Secondary                             | Deferred start to 2024-2025 before launch         |
| Olmsted     | Mayo Senior High School                           | Deferred start to 2024-2025 before launch         |
| Steele      | Medford Secondary                                 | Participating 2023-2024                           |
| Mille Lacs  | Milaca 7-12 Online                                | Participating 2023-2024                           |
| Mille Lacs  | Milaca Area Learning Center                       | Participating 2023-2024                           |
| Mille Lacs  | Milaca Secondary High School                      | Participating 2023-2024                           |
| Ramsey      | Minnesota Online High School                      | Deferred start to 2024-2025 before launch         |
| Houston     | Minnesota Virtual Academy High School             | Participating 2023-2024                           |
| Hennepin    | Minnetonka Senior High School                     | Participating 2023-2024                           |
| Pope        | Minnewaska Secondary                              | Participating 2023-2024                           |
| Chippewa    | Montevideo Senior High School                     | Deferred start to 2024-2025 before launch         |
| Hennepin    | MPS Online 6-12                                   | Participating 2023-2024                           |
| Hennepin    | MTS High School                                   | OHE Deferred start to 2024-2025                   |
| Hennepin    | New Code Academy High School                      | Participating 2023-2024                           |
| Hennepin    | North High School (MPS)                           | Participating 2023-2024                           |
| Ramsey      | North Senior High (North St. Paul)                | Participating 2023-2024                           |
| Cass        | Northland Secondary                               | Participating 2023-2024                           |

| County Name | School Name                              | Direct Admissions Status                    |
|-------------|--|---|
| Ramsey      | Open World Learning Secondary            | Participating 2023-2024                     |
| Anoka       | PACT Charter Secondary                   | Participating 2023-2024                     |
| Washington  | Park High School                         | Participating 2023-2024                     |
| Hennepin    | Parnassus Preparatory School-Rhetoric    | Deferred start to 2024-2025 before launch   |
| Crow Wing   | Pequot Lakes Senior High School          | Participating 2023-2024                     |
| Hennepin    | PIM Arts High School                     | Participating 2023-2024                     |
| Wabasha     | Plainview-Elgin-Millville High School    | Participating 2023-2024                     |
| Hennepin    | Prairie Seeds High School Academy        | OHE Deferred start to 2024-2025             |
| Scott       | Prior Lake High School                   | Participating 2023-2024                     |
| Ramsey      | Quora Secondary School                   | Deferred start to 2024-2025 before launch   |
| Red Lake    | Red Lake County Central High School      | Deferred start to 2024-2025 before launch   |
| Beltrami    | Red Lake Secondary                       | Participating 2023-2024                     |
| Redwood     | Red Rock Central Secondary               | Participating 2023-2024                     |
| Hennepin    | Richfield Senior High School             | Participating 2023-2024                     |
| Hennepin    | Robbinsdale Armstrong Senior High School | OHE Deferred start to 2024-2025             |
| Hennepin    | Robbinsdale Virtual Academy              | OHE Deferred start to 2024-2025             |
| Olmsted     | Rochester Alternative Learning Center    | Participating 2023-2024                     |
| Hennepin    | Rockford Secondary                       | Participating 2023-2024                     |
| Hennepin    | Roosevelt High School                    | Participating 2023-2024                     |
| Ramsey      | Roseville Area Senior High School        | Participating 2023-2024                     |
| Olmsted     | RPS Online High School                   | Participating 2023-2024                     |
| Hennepin    | SAGE Academy Charter School              | Participating 2023-2024                     |
| Ramsey      | Saint Paul Online High School            | Participating 2023-2024                     |
| Dakota      | School of Environmental Studies          | Deferred start to 2024-2025 before launch   |
| Wadena      | Sebeka Secondary                         | Deferred start to 2024-2025 before launch   |
| Ramsey      | Sejong Academy Upper School              | Deferred start to 2024-2025 before launch   |
| Scott       | Shakopee High School                     | Participating 2023-2024                     |
| Sibley      | Sibley East-Arlington Senior High School | Deferred start to 2024-2025 before launch   |
| Dakota      | Simley Senior High School                | Participating 2023-2024                     |
| Hennepin    | South High School                        | Participating 2023-2024                     |
| Dakota      | South St. Paul High School               | Participating 2023-2024                     |
| Washington  | South Washington Alternative High School | Participating 2023-2024                     |
| Washington  | SoWashCo Online                          | Participating 2023-2024                     |
| Houston     | Spring Grove Secondary                   | Participating 2023-2024                     |
| Anoka       | Spring Lake Park Senior High School      | Participating 2023-2024                     |
| Hennepin    | St. Louis Park Senior High School        | Participating 2023-2024                     |
| Nicollet    | St. Peter High School                    | Participating 2023-2024                     |
| Todd        | Staples-Motley Senior High School        | Participating 2023-2024                     |
| Carver      | SWMetro ALC                              | HS Deferred start to 2024-2025 after launch |
| Washington  | Tartan Senior High School                | Participating 2023-2024                     |

| County Name | School Name                          | Direct Admissions Status                          |
|-------------|--------------------------------------|---|
| Stearns     | Technical Senior High School         | Participating 2023-2024                           |
| Wright      | Terra Nova School                    | Participating 2023-2024                           |
| Beltrami    | TrekNorth High School                | Participating 2023-2024                           |
| Faribault   | United South Central High School     | Participating 2023-2024                           |
| Hennepin    | Venture Academy High School          | Participating 2023-2024                           |
| Wadena      | Verndale Secondary                   | Participating 2023-2024                           |
| Hennepin    | VOA High School                      | District Deferred start to 2024-2025 after launch |
| Carver      | Waconia High School                  | Participating 2023-2024                           |
| Wadena      | Wadena-Deer Creek Senior High School | Participating 2023-2024                           |
| Roseau      | Warroad High School                  | OHE Deferred start to 2024-2025                   |
| Waseca      | Waseca Area Learning Center          | District Deferred start to 2024-2025 after launch |
| Waseca      | Waseca Senior High School            | Participating 2023-2024                           |
| Hennepin    | Washburn High School                 | Participating 2023-2024                           |
| Ramsey      | Washington Tech Secondary Magnet     | Participating 2023-2024                           |
| Hennepin    | Watershed High School                | Participating 2023-2024                           |
| Carver      | Watertown Mayer High School          | Deferred start to 2024-2025 before launch         |
| Washington  | Woodbury High School                 | Participating 2023-2024                           |
| Goodhue     | Zumbrota-Mazeppa Senior High School  | Participating 2023-2024                           |

**Table A4. Participating College Possible-serving High Schools 2023-2024 Academic Year**

| High School Name                    | High School Name (continued)           |
|-------------------------------------|--|
| Columbia Heights Senior High        | Ubah Medical Academy Charter School    |
| Coon Rapids High School             | Wayzata High                           |
| Fridley Senior High                 | Metro College Prep                     |
| Frazee Secondary                    | Orono Senior High                      |
| Dilworth-Glyndon-Felton Senior High | Cambridge-Isanti High School           |
| Moorhead High School                | RTR Secondary School                   |
| Burnsville High School              | LeRoy Secondary                        |
| Farmington High School              | Worthington Senior High                |
| Triton High School                  | Perham Senior High                     |
| Red Wing Senior High                | Community of Peace Academy High School |
| Champlin Park High School           | Faribault Senior High                  |
| Henry High (now Camden)             | Eveleth-Gilbert Secondary              |
| Park Center IB World School         | Mountain Iron-Buhl Secondary           |
| Robbinsdale Armstrong               | Sartell Senior High                    |
| Robbinsdale Cooper Senior High      | Blooming Prairie Secondary             |
| St. Charles Secondary               |  |

**Table A5. Participating Colleges and Universities 2023-2024 Academic Year  
(Fall 2024 Admissions) Sorted by Sector and Name**

| <b>Sector</b>                             | <b>Institution</b>                              |
|---|---|
| Minnesota State Colleges and Universities | Alexandria Technical & Community College        |
| Minnesota State Colleges and Universities | Anoka Technical College                         |
| Minnesota State Colleges and Universities | Anoka-Ramsey Community College                  |
| Minnesota State Colleges and Universities | Bemidji State University                        |
| Minnesota State Colleges and Universities | Central Lakes College                           |
| Minnesota State Colleges and Universities | Century College                                 |
| Minnesota State Colleges and Universities | Dakota County Technical College                 |
| Minnesota State Colleges and Universities | Fond du Lac Tribal & Community College          |
| Minnesota State Colleges and Universities | Hennepin Technical College                      |
| Minnesota State Colleges and Universities | Inver Hills Community College                   |
| Minnesota State Colleges and Universities | Lake Superior College                           |
| Minnesota State Colleges and Universities | Metropolitan State University                   |
| Minnesota State Colleges and Universities | Minneapolis College                             |
| Minnesota State Colleges and Universities | Minnesota North College                         |
| Minnesota State Colleges and Universities | Minnesota State College Southeast               |
| Minnesota State Colleges and Universities | Minnesota State Community and Technical College |
| Minnesota State Colleges and Universities | Minnesota State University Moorhead             |
| Minnesota State Colleges and Universities | Minnesota State University, Mankato             |
| Minnesota State Colleges and Universities | Minnesota West Community & Technical College    |
| Minnesota State Colleges and Universities | Normandale Community College                    |
| Minnesota State Colleges and Universities | North Hennepin Community College                |
| Minnesota State Colleges and Universities | Northland Community & Technical College         |
| Minnesota State Colleges and Universities | Northwest Technical College                     |
| Minnesota State Colleges and Universities | Pine Technical & Community College              |
| Minnesota State Colleges and Universities | Ridgewater College                              |
| Minnesota State Colleges and Universities | Riverland Community College                     |
| Minnesota State Colleges and Universities | Rochester Community and Technical               |
| Minnesota State Colleges and Universities | Saint Paul College                              |
| Minnesota State Colleges and Universities | South Central College                           |
| Minnesota State Colleges and Universities | Southwest Minnesota State University            |
| Minnesota State Colleges and Universities | St. Cloud State University                      |
| Minnesota State Colleges and Universities | St. Cloud Technical & Community College         |

| Sector                                    | Institution                             |
|---|---|
| Minnesota State Colleges and Universities | Winona State University                 |
| Private College                           | Augsburg University                     |
| Private College                           | Bethany Lutheran College                |
| Private College                           | Bethel University                       |
| Private College                           | College of Saint Benedict               |
| Private College                           | College of St. Scholastica, The         |
| Private College                           | Concordia College                       |
| Private College                           | Concordia University St. Paul           |
| Private College                           | Dunwoody College of Technology          |
| Private College                           | Gustavus Adolphus College               |
| Private College                           | Hamline University                      |
| Private College                           | Minneapolis College of Art and Design   |
| Private College                           | Saint John's University                 |
| Private College                           | Saint Mary's University of Minnesota    |
| Private College                           | St. Catherine University                |
| Private College                           | University of St. Thomas                |
| Private College                           | Northwestern Health Sciences University |
| Tribal College                            | Red Lake Nation College                 |
| Tribal College                            | White Earth Tribal & Community College  |
| University of Minnesota                   | University of Minnesota Crookston       |
| University of Minnesota                   | University of Minnesota Duluth          |
| University of Minnesota                   | University of Minnesota Morris          |
| University of Minnesota                   | University of Minnesota Rochester       |

## Appendix B. Direct Admissions’ High School Communication Metrics

**Table B1. Number of Students Enrolled and Requesting Direct Admissions for Fall 2023, as of January 25, 2023**

| High School Name                       | Unduplicated Count of Students Requesting Direct Admissions | Count of Enrolled Seniors | Percent of Enrolled Seniors Requesting Direct Admissions |
|--|---|---------------------------|--|
| 622 Online High School                 | 9   | 29                        | 31%  |
| A. G. A. P. E. Teen Parent High School | 0   | 7                         | 0%   |
| Albert Lea Senior High School          | 63  | 208                       | 30%  |
| ALC Gateway to College                 | 10  | 14                        | 71%  |
| Apollo Senior High School              | has not reported  | 305                       | has not reported   |
| Austin Online Academy                  | 7   | 23                        | 30%  |
| Austin Senior High School              | 183   | 292                       | 63%  |
| Banaadir Academy                       | 9   | 12                        | 75%  |
| Barnesville Secondary                  | 9   | 75                        | 12%  |
| Blue Earth Area Secondary              | 29  | 89                        | 33%  |
| Brandon-Evansville High School         | 6   | 32                        | 19%  |
| Brooklyn Center Early College Academy  | has not reported  | 11                        | has not reported   |
| Brooklyn Center High School            | has not reported  | 146                       | has not reported   |
| Buffalo High School                    | 104   | 438                       | 24%  |
| Cannon Falls Secondary                 | 16  | 84                        | 19%  |
| Central Senior High School             | 82  | 383                       | 21%  |
| Century Senior High School             | has not reported  | 420                       | has not reported   |
| Chanhassen High School                 | 34  | 346                       | 10%  |
| Chaska High School                     | 48  | 381                       | 13%  |
| Clearbrook-Gonvick Secondary           | 16  | 28                        | 57%  |
| Cloquet High School                    | 99  | 209                       | 47%  |
| Como Park Senior High School           | 33  | 284                       | 12%  |
| Creative Arts Secondary School         | 13  | 39                        | 33%  |
| CVA Fusion High School                 | 4   | 12                        | 33%  |
| CVA Pascal High School                 | 1   | 17                        | 6%   |
| Detroit Lakes Senior High School       | 23  | 221                       | 10%  |
| East Ridge High School                 | 60  | 528                       | 11%  |
| Eden Prairie Senior High School        | 144   | 668                       | 22%  |
| Edina High School                      | 121   | 661                       | 18%  |
| Edison High School                     | 42  | 219                       | 19%  |
| FAIR High School                       | 9   | 71                        | 13%  |

| High School Name                                  | Unduplicated Count of Students Requesting Direct Admissions | Count of Enrolled Seniors | Percent of Enrolled Seniors Requesting Direct Admissions |
|---|---|---------------------------|--|
| Faribault High School                             | 59  | 239                       | 25%  |
| GFW High School                                   | has not reported  | 65                        | has not reported   |
| Goodhue Secondary                                 | 13  | 44                        | 30%  |
| Gordon Parks High School                          | 5   | 22                        | 23%  |
| Harding Senior High School                        | 61  | 412                       | 15%  |
| Hawley Secondary                                  | 12  | 70                        | 17%  |
| Henning Secondary                                 | 7   | 17                        | 41%  |
| Heritage Academy High School                      | 1   | 25                        | 4%   |
| Highland Park Senior High School                  | 60  | 361                       | 17%  |
| Hmong College Prep Academy High School            | 160   | 179                       | 89%  |
| Hopkins High School                               | 105   | 481                       | 22%  |
| Humboldt Secondary High School                    | 18  | 176                       | 10%  |
| Insight School of Minnesota                       | has not reported  | 82                        | has not reported   |
| Integrated Arts Academy                           | 2   | 24                        | 8%   |
| Jefferson Senior High School                      | 109   | 413                       | 26%  |
| John Marshall Senior High School                  | has not reported  | 374                       | has not reported   |
| Johnson Senior High School                        | 91  | 284                       | 32%  |
| Jordan High School                                | 66  | 180                       | 37%  |
| Kennedy High School (Bloomington)                 | 71  | 367                       | 19%  |
| Kennedy High School (Fergus Falls)                | 23  | 156                       | 15%  |
| Lakes International Language Academy Upper School | 17  | 58                        | 29%  |
| LEAP High School                                  | 10  | 21                        | 48%  |
| Lewiston-Altura Secondary                         | 26  | 70                        | 37%  |
| Mankato East Senior High School                   | 66  | 299                       | 22%  |
| Mankato West Senior High School                   | 90  | 296                       | 30%  |
| Medford Secondary                                 | 11  | 61                        | 18%  |
| Milaca Secondary High School*                     | 107   | 150                       | 71%  |
| Minnesota Virtual Academy High School             | 31  | 232                       | 13%  |
| Minnetonka Senior High School                     | 14  | 884                       | 2%   |
| Minnewaska Secondary                              | 36  | 97                        | 37%  |
| MPS Online 6-12                                   | has not reported  | 52                        | has not reported   |
| New Code Academy High School                      | 3   | 13                        | 23%  |
| North High School (MPS)                           | 5   | 129                       | 4%   |
| North Senior High School                          | 93  | 388                       | 24%  |
| Northland Secondary                               | 1   | 32                        | 3%   |
| Open World Learning Community                     | 17  | 64                        | 27%  |



| High School Name                    | Unduplicated Count of Students Requesting Direct Admissions | Count of Enrolled Seniors | Percent of Enrolled Seniors Requesting Direct Admissions |
|-------------------------------------|---|---------------------------|--|
| PACT Charter Secondary              | 7   | 60                        | 12%  |
| Park High School                    | 125   | 470                       | 27%  |
| Pequot Lakes Senior High School     | 8   | 159                       | 5%   |
| PIM Arts High School                | 39  | 94                        | 41%  |
| Plainview-Elgin-Millville Schools   | has not reported  | 109                       | has not reported   |
| Prior Lake High School              | 17  | 688                       | 2%   |
| Red Lake Secondary                  | 5   | 71                        | 7%   |
| Red Rock Central Secondary          | 15  | 40                        | 38%  |
| Richfield Senior High School        | 107   | 336                       | 32%  |
| Rochester ALC                       | has not reported  | 102                       | has not reported   |
| Rockford Secondary                  | 35  | 133                       | 26%  |
| Roosevelt High School               | 91  | 237                       | 38%  |
| Roseville Area Senior High School   | 190   | 626                       | 30%  |
| RPS Online High School              | has not reported  | 44                        | has not reported   |
| SAGE Academy Charter School         | 0   | 12                        | 0%   |
| Saint Paul Online High School       | 9   | 79                        | 11%  |
| Shakopee High School                | 98  | 676                       | 14%  |
| Simley Senior High School           | 66  | 260                       | 25%  |
| South High School                   | 78  | 396                       | 20%  |
| South Saint Paul High School        | 23  | 228                       | 10%  |
| SoWashCo Online**                   | 83  | 1 to 99                   | see note   |
| Spring Grove Secondary              | has not reported  | 18                        | has not reported   |
| Spring Lake Park Senior High School | 40  | 485                       | 8%   |
| St. Louis Park Senior High School   | 85  | 364                       | 23%  |
| St. Peter High School               | 71  | 183                       | 39%  |
| Staples-Motley Senior High School   | 6   | 83                        | 7%   |
| Tartan High School                  | 187   | 423                       | 44%  |
| Technical Senior High School        | has not reported  | 379                       | has not reported   |
| Terra Nova School                   | 6   | 23                        | 26%  |
| TrekNorth High School               | 28  | 40                        | 70%  |
| United South Central High School    | 8   | 51                        | 16%  |
| Venture Academy High School         | 32  | 54                        | 59%  |
| Verndale Secondary                  | 1   | 53                        | 2%   |
| Waconia High School                 | 90  | 345                       | 26%  |
| Wadena-Deer Creek Senior High       | 11  | 79                        | 14%  |
| Waseca Senior High School           | 53  | 125                       | 42%  |
| Washburn High School                | 159   | 432                       | 37%  |
| Washington Technology High School   | 72  | 250                       | 29%  |

| <b>High School Name</b>      | <b>Unduplicated Count of Students Requesting Direct Admissions</b> | <b>Count of Enrolled Seniors</b> | <b>Percent of Enrolled Seniors Requesting Direct Admissions</b> |
|------------------------------|--|----------------------------------|---|
| Watershed High School        | 2  | 9                                | 22%   |
| Woodbury High School         | 54   | 499                              | 11%   |
| Zumbrota-Mazeppa High School | 33   | 105                              | 31%   |


\*Includes Milaca Area Learning Center and Milaca 7-12 Online as the parent school.

\*\* May include South Washington Alternative High School in count as still resolving export file data.

Note: Anticipated count of enrolled seniors as of June 2023 was provided by the Minnesota Department of Education and projected from Grade 11 enrollment numbers. High schools or districts who indicated deferring to 2024-2025 are excluded.

# Appendix C. Resources for High Schools and Students

Figure C1. Direct Admissions Frequently Asked Questions for High School Partners



**DIRECT ADMISSIONS**  
MINNESOTA

**Direct Admissions Frequently Asked Questions for High School Partners**

**1. What is Direct Admissions?**

The Direct Admissions pilot is designed to encourage all high school seniors on track to graduate in Spring 2024 to view themselves as “college material”. This pilot will hopefully help alleviate some of the anxiety around the college application process by proactively informing students of colleges/universities who are committed to admitting them. Students will receive a personalized letter indicating that they have met the academic criteria for guaranteed general admission to participating colleges and outlines the steps required for students to select their institution(s).

**2. Who is in charge of Direct Admissions?**

The Direct Admissions program is coordinated by the Minnesota Office of Higher Education and funded by the State of Minnesota. The pilot is a partnership between the selected high schools, participating colleges and universities and the Office of Higher Education.

**3. How will individual students find out about Direct Admissions?**

High school staff are encouraged to begin conversations about Direct Admissions Minnesota with seniors at the beginning of the school year. Students will receive the official Direct Admissions communication in early October, co-signed by their high school and the Office of Higher Education, that notifies them that they have direct admissions opportunities to a specific list of schools.

High schools will be provided with an FAQ document designed for students and parents, a printed and digital fact sheet for students and parents, promotional posters, and promotional swag items to be used by staff and/or students. They will also receive optional social media graphics, newsletter copy, and website copy that high schools can use to share information about Direct Admissions with their students and families.

**4. Are there financial aid, scholarships, or grants associated with Direct Admissions?**

No, there are not scholarships or grants associated with Direct Admissions, though participating colleges have agreed to waive application fees for participating students. All students will be encouraged to complete the FAFSA as part of their college search process.

1

**11. Can students opt out of this program?**

Yes, parents or students can let their student’s counselor (or the Minnesota Office of Higher Education) know that they (or their student) do not wish to receive college planning information from Direct Admissions Minnesota. If emailing DHE directly, emails should include the student’s name, high school, and counselor name (if known).

**12. Are we allowed to share student data (names, addresses, high school transcript data) with you?**

Yes. Participating high schools and the Minnesota Office of Higher Education will complete the necessary data sharing agreements and memorandums of understanding to ensure compliance with all applicable data privacy and security regulations.

**13. Why was our school selected to participate?**

The Office of Higher Education and the Direct Admissions workgroup sought participation from high schools that represent the geographic and demographic diversity of Minnesota as well as schools that identified increasing college going rates for their students as a priority or part of their strategic plan.

**14. Which colleges/universities are participating in this program?**

Over 50 Minnesota colleges and universities are participating, including all of the Minnesota State community and technical colleges; tribal colleges; the University of Minnesota campuses at Crookston, Rochester, Morris, and Duluth; Dunwoody College of Technology, and many of the state’s private, non-profit colleges. The University of Minnesota Twin Cities, Macalester, and Carleton are not participating.

**15. Will this include information for students who want to go into trade programs?**

Yes, all of Minnesota’s community and technical colleges and Dunwoody College of Technology were invited to participate. The Minnesota Office of Higher Education recognizes that any and all forms of education and training beyond high school are important. If there is a specific college or technical school you have questions about, please let the Minnesota Office of Higher Education know.

**16. What happens if a student’s grades drop or they don’t graduate as expected?**

Direct Admissions options will be available for students who graduate in Spring 2024. If a student fails to graduate or has a significant decline in academic performance, a college or university may rescind their acceptance. In accordance with their usual admission process.

**5. What do students do once they get their letter?**

Students will be encouraged to select the college or colleges/universities that they are interested in by marking the “yes” box in their digital letter. Those schools will then be informed of the student’s interest and will send the student more information directly. Students who are not interested in participating do not need to do anything to follow up. No student’s information will be shared with the participating colleges and universities without the student expressing interest via the Direct Admission process.

**6. Do students still have to submit an admissions application?**

Yes, students must still complete an admissions application and supply any additional documents required (essay, test scores, letters of recommendation, etc.) by the institution.

**7. What happens after the student applies for admissions?**

While the student is guaranteed admission to the colleges and universities on their list (provided that they complete their application by the school’s application deadlines), we anticipate that they will get their admissions notification/acceptance letter in the same cycle as non-Direct Admissions students. Once admitted, the rest of the admissions process (orientation, enrollment, financial aid) happens in the same time as for newly admitted students. It can be helpful to think of Direct Admissions as a way into the front door... but once in the front door they are a part of the applicant and admit pool as usual.

**8. Are other schools participating in this program?**

Yes, during the 2023-2024 school year, over 120 high schools will be participating. We aim to continue to expand the program to all public and charter high schools in the state in future years.

**9. Was there any cost to the school or students for participating in this program?**

No, funding for the staff time require to prepare for Direct Admissions was covered by the Office of Higher Education. There is no cost for students or families to participate.

**10. Does Direct Admissions mean students get accepted into all programs or majors a college or university may offer?**

Direct Admissions guarantees students will have general admission into an institution. Some programs or majors may have additional admissions criteria or require an additional application, submission of a portfolio, or other steps as determined by the college or university. Students interested in space limited programs should work with the college or university to find out more about additional steps required.

2

**17. Who is responsible for sending the letters? Are they physical letters?**

In order to maximize the privacy of students, high schools will be sending the letters (or emails or portal notifications) using the means of communication the high school feels is most effective. We’ve received feedback from schools that some prefer physical letters, some prefer emails, and some prefer portal notifications. Direct Admissions is seeking to use the method that will have the highest level of student responsiveness and trust that schools know their students best.

**18. Are undocumented students eligible for the direct admissions program?**

Yes, undocumented Minnesota residents are eligible.

**19. How does Direct Admissions work with the U of M ShareMyApp program?**

Here’s how the U of M ShareMyApp program works:

- Students who submit a complete freshman admission application to the Twin Cities campus can request to have their application materials shared with one or more of the Greater MN campuses (Crookston, Duluth, Morris and Rochester) with no additional fee (or fee waiver) required.
- Students wishing to be considered for freshman admission to the Twin Cities campus must still complete the Twin Cities admission application.

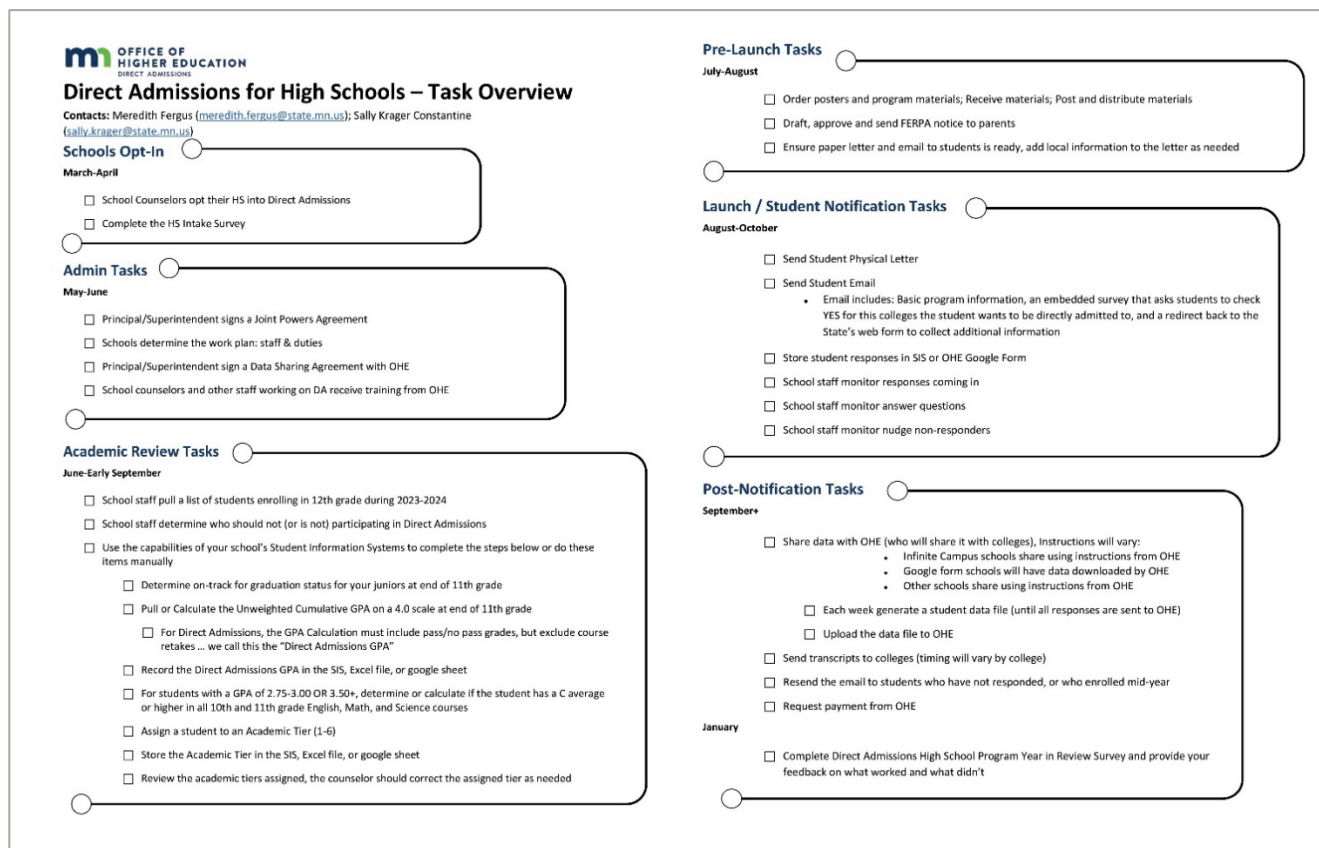
The U of M ShareMyApp opens in mid-October. The University of Minnesota doesn’t want to prevent students from applying earlier if they’re ready (especially if they’ll be eligible for the fee waiver). It is a preference to have students apply directly to their college(s) of interest; eligible students interested in applying to the University of Minnesota Crookston, Duluth, and/or Morris campuses are encouraged to take advantage of Direct Admissions to facilitate those applications.

**20. How will the Direct Admissions process work for students that are attending a pilot high school, studying abroad in the U.S. (considered international students) and wanting to attend a participating institution?**

Students who are classified as international students are not eligible for the Direct Admissions pilot. These students must work directly with colleges or universities they are interested in to apply for admissions and to submit additional required documents.

*The Frequently Asked Questions for High School Partners document was sent to participating high schools to assist with program implementation.*

Figure C2. Direct Admissions Task Overview for High Schools



The Direct Admissions Task Overview is a checklist and timeline of tasks that high school counselors and other school and district staff members should complete for a successful Direct Admissions implementation.

To begin in March-April of the school year prior, “Schools Opt-In” to the program. In May-June, “Administrative Tasks” must be completed, which includes several contractual agreements and training. In June-Early September, “Academic Review Tasks” are completed by school staff, which determines academic tiers for students participating in the program. In July-August, “Pre-Launch Tasks” include ordering promotional materials, sending FERPA notification to parents and ensuring letters are prepared. The “Launch/Student Notification Tasks” occur in August-October, in which students receive and respond to the Direct Admissions notification. “Post-Notification Tasks” inform school staff on next steps, which includes sharing the data back to OHE, sending transcripts to selected colleges, requesting payment from OHE and completing feedback survey.

## Direct Admissions Marketing Checklist and Timeline for High School Partners

The Direct Admissions Marketing Checklist and Timeline for High School Partners was created as a guide to assist high school counselors, administration and staff in the marketing and promotion of the Direct Admissions

program at their schools. The checklist can be used to keep track of tasks and recommended timeframe and use of various program materials.

The following figures are samples of the marketing collateral developed:

Figure C3. Direct Admissions Student Fact Sheet

The Direct Admissions fact sheet was created for students to outline the program, a checklist of next steps, and frequently asked questions to understand how to take full advantage of the program.

Figure C4. Direct Admissions Translated Student Fact Sheet

Fact sheets were available in the following languages: Amharic, Anuak, Arabic, Chinese, French, Hmong, Japanese, Karen, Korean, Nuer, Oromo, Somali, Spanish, and Vietnamese.



Figure C5. Direct Admissions Poster



The poster features a group of diverse high school students smiling. At the top left, a green circle contains the text "All students are COLLEGE MATERIAL". The top right corner has the logo for the "OFFICE OF HIGHER EDUCATION DIRECT ADMISSIONS". The main title reads "WE ARE A DIRECT ADMISSIONS Minnesota High School". Below this, a text block states: "MN high school seniors no longer have to wonder 'Will I get in?' With Direct Admissions, seniors are proactively notified of which participating colleges and universities they are accepted to - before they even apply! Now, seniors can apply with confidence." A section titled "DIRECT ADMISSIONS AIMS TO" lists three goals: "Improve College Access for All Students", "Promote College-Going Culture in Minnesota", and "Reduce Equity Gaps and Self-Selection Bias". Another section titled "MN SENIORS BENEFIT FROM" lists three benefits: "Stress-Free College Admissions Process", "No Application Fees", and "Boosted Confidence Knowing They Are College-Ready!". At the bottom, it says "LEARN MORE AT www.oh.e.state.mn.us/directadmissions" and includes a QR code.

**m** OFFICE OF HIGHER EDUCATION  
DIRECT ADMISSIONS

All students are  
**COLLEGE MATERIAL**

WE ARE A  
**DIRECT ADMISSIONS**  
Minnesota High School

*MN high school seniors no longer have to wonder "Will I get in?"  
With Direct Admissions, seniors are proactively notified of which  
participating colleges and universities they are accepted to -  
before they even apply!  
Now, seniors can apply with confidence.*

**DIRECT ADMISSIONS AIMS TO**

- Improve**  
College Access for  
All Students
- Promote**  
College-Going Culture  
in Minnesota
- Reduce**  
Equity Gaps and  
Self-Selection Bias

**MN SENIORS BENEFIT FROM**

- ✓ *Stress-Free College Admissions Process*
- ✓ *No Application Fees*
- ✓ *Boosted Confidence Knowing They Are College-Ready!*

LEARN MORE AT  
[www.oh.e.state.mn.us/directadmissions](http://www.oh.e.state.mn.us/directadmissions)



Promotional posters were available for order for high schools to promote the program locally. Posters were available in the additional following languages: Hmong, Spanish and Somali.

The Marketing Checklist and Timeline included the following information:

| Month          | Task   |
|----------------|--|
| July 2023      | <ul style="list-style-type: none"> <li>• Submit order form for Communications Materials</li> <li>• Receive Welcome Packet with Communications Materials</li> <li>• ICYMI: If you were unable to attend the Direct Admissions Kick-Off, watch the May 2023 Kick-Off here: <a href="http://www.youtube.com/watch?v=33cKid0yFTI">www.youtube.com/watch?v=33cKid0yFTI</a></li> </ul>   |
| August 2023    | <ul style="list-style-type: none"> <li>• Hang Direct Admissions posters in student common areas</li> <li>• Add Direct Admissions Summary in Back-to-School Parent Newsletter</li> <li>• Share You Are College Ready - Direct Admissions Intro video with students and parents via Back-to-School Parent Newsletter</li> <li>• Use printed or digital Student Fact Sheets to promote Direct Admissions program at Back-to-School events</li> <li>• Use Social Media Graphic - August to promote Direct Admissions on school or district social media</li> </ul>   |
| September 2023 | <ul style="list-style-type: none"> <li>• Provide Student Fact Sheets to seniors</li> <li>• Provide MyHigherEd resources in counselor's office</li> <li>• Add Direct Admissions Summary in September Parent Newsletter</li> <li>• Add digital versions of Direct Admissions Communications Materials into your high school's online platform for Class of 2024 seniors</li> <li>• Use Social Media Graphic - September to promote Direct Admissions on school or district social media</li> </ul>   |
| October 2023   | <ul style="list-style-type: none"> <li>• Send physical and digital Direct Admissions Letter to seniors</li> <li>• Use provided Direct Admissions swag items to promote the program at your school; School staff can use/wear items to promote program OR provide swag items as incentive for students to complete letter/application portal and/or submit applications to their selected colleges</li> <li>• Note: Promotion using Direct Admissions swag items is up to high schools individually. High schools are encouraged to share photos of students or your high school staff wearing swag items.</li> <li>• Use Social Media Graphic - October to promote Direct Admissions on school or district social media</li> </ul> |
| November 2023  | <ul style="list-style-type: none"> <li>• Post Social Media Graphic - November</li> </ul>   |
| December 2023  | <ul style="list-style-type: none"> <li>• Post Social Media Graphic - December</li> </ul>   |
| January 2024   | <ul style="list-style-type: none"> <li>• Post Social Media Graphic - January</li> </ul>  |
| February 2024  | <ul style="list-style-type: none"> <li>• Share Introducing Direct Admissions – You Are College Ready video with current juniors (Class of 2025)</li> </ul>   |

Figure C6. Direct Admissions Participating High School and College Flyer

**OFFICE OF HIGHER EDUCATION DIRECT ADMISSIONS**

All students are **COLLEGE MATERIAL**  
DIRECT ADMISSIONS MINNESOTA

**2023-2024**

**DIRECT ADMISSIONS PARTICIPATING COLLEGES AND UNIVERSITIES**

**Arrowhead**  
Fond du Lac Tribal & Community College  
Lake Superior College  
Minnesota North College  
The College of St. Scholastica  
University of Minnesota Duluth

**Central**  
College of Saint Benedict/Saint John's University  
Saint John's University  
St. Cloud State University  
St. Cloud Technical & Community College

**East Central**  
Pine Technical and Community College

**Headwaters**  
Semi-High State University  
Northwest Technical College  
Red Lake Nation College  
White Earth Tribal & Community College

**North Central**  
Central Lakes College  
Minnesota State Community & Technical College  
Northwest Technical College

**Northwest**  
North and Community & Technical College  
University of Minnesota Crookston

**South Central**  
Bathany Lutheran College  
Custarus Adolphus College  
Minnesota State University, Mankato  
South Central College

**South East**  
Minnesota State College Southeast  
Rivierland Community College  
Rochester Community & Technical College  
Saint Mary's University of Minnesota  
University of Minnesota Rochester  
Winona State University

**South West**  
Southwest Minnesota State University  
Ridgewater College  
Minnesota West Community & Technical College

**Twin Cities Metro Area**  
Anoka Technical College  
Anoka-Ramsey Community College  
Augsburg University

Bethel University  
Bethel University Online  
Century College  
Concordia University, St. Paul  
Dakota County Technical College  
Dunwoody College of Technology  
Hamline University  
Hennepin Technical College  
Inver Hills Community College  
Metropolitan State University  
Minneapolis College  
Minneapolis College of Art & Design  
Normandale College  
North Hennepin Community College  
Northwestern Health Sciences University  
Saint Paul College  
St. Catherine University  
University of St. Thomas

**Upper Minnesota Valley**  
Minnesota West Community & Technical College

**West Central**  
Alexandria Technical & Community College  
Concordia College  
Minnesota State University Moorhead  
Minnesota State Community & Technical College  
University of Minnesota Morris

**WE ARE A DIRECT ADMISSIONS Minnesota Institution**

**MN high school seniors no longer have to wonder "Will I get in?"**  
With Direct Admissions, seniors are proactively notified of which participating colleges and universities they are accepted to - before they even apply!  
**Now, seniors can apply with confidence.**

Learn more at [www.ohe.state.mn.us/directadmissions](http://www.ohe.state.mn.us/directadmissions)

**OFFICE OF HIGHER EDUCATION DIRECT ADMISSIONS**

The Direct Admissions Minnesota program is designed to encourage all graduating seniors to consider themselves "college material" by proactively notifying them of the colleges and universities that are eager to admit them. Students will receive a letter at the beginning of the academic year that lists which participating Minnesota colleges and universities will grant them admission, information about how to apply, and other essential next steps.

**2023-2024**

**DIRECT ADMISSIONS PARTICIPATING HIGH SCHOOLS**

**Arrowhead**  
Cloquet Senior

**Central**  
Apollo Senior High  
Buffalo Senior High  
Rockford Secondary  
Technical Senior High  
Terra Nova School

**East Central**  
Milaca Secondary High

**Headwaters**  
Clearbrook-Convics Secondary  
Red Lake Secondary  
TrekNorth High School

**North Central**  
Northland Secondary  
Pequot Lakes Senior High  
Stables-Motley Senior High  
Vermlake Secondary  
Wadena-Deer Creek Senior High

**Northwest**  
Red Lake County Central High School  
Warroad High School

**South Central**  
Blue Earth Area Secondary  
GFW I High School  
Mankato East Senior High  
Mankato West Senior High  
St. Peter High School  
United South Central High School  
Waseca Area Learning Center  
Waseca Senior High

**South East**  
Albert Lea Senior High  
Austin Online Academy  
Austin Senior High  
Century Senior High  
Fairbault Senior High  
Fairbault Secondary  
Goodhue Secondary  
John Marshall Senior High  
Lewiston-Altura Secondary  
Mayo Senior High  
Medford Secondary  
Minnesota Virtual Academy  
Plainville-Edin-Milville High  
Spring Grove Secondary  
Zumbrota-Mazeppa Senior High

**South West**  
Red Rock Central Secondary

**Twin Cities Metro Area**  
422 Online High School  
A. G. A. R. E. Tech Puzent  
AJC Gateway to College  
Banaadri Secondary  
Brooklyn Center Early College Academy  
Brooklyn Center High School  
Central Senior High  
Chanhassen High School  
Cheika High School  
Como Park Senior High  
Creative Arts Secondary School  
CVA Fusion High School  
CVA PASCAL Middle & High School  
East Ridge High School  
Eden Prairie Senior High  
Edina Senior High  
Edison High  
FAIR High  
Gordon Parks High School  
Harding Senior High  
Harrison Education Center Heritage Academy High  
Highland Park Senior High  
Frimong College Prep Academy High  
Hopkins Senior High  
Humboldt High School

Inglis School of Minnesota  
Integrated Arts Academy  
Jefferson Senior High  
Johnson Senior High  
Jordan High School  
Kennedy Senior High  
Lakes International Language Academy Upper School  
LEAP I High School  
Minnetonka Senior High  
MPS Online (6-12)  
MIS High School  
New Code Academy High School  
North Senior High  
Open World Learning Secondary  
PACT Charter Secondary  
Park High School  
PIM Arts High School  
Prairie Seeds High School Academy  
Prior Lake High School  
Richfield Senior High  
Robbinsdale Armstrong Senior High  
Robbinsdale Virtual Academy  
Roosevelt High  
Rooseville Area Senior High  
SAGE Academy Charter School

Saint Paul Online High School  
Shakopee High School  
Simley Senior High  
South High  
South St. Paul High School  
South Washington Alternative High School  
SoWashCo Online  
Spring Lake Park Senior High  
St. Louis Park Senior High  
SW Metro ALC  
Tartan Senior High  
Venture Academy High School  
VOA High  
Washburn High  
Washington Tech Secondary Magnet  
Watershed High School  
Woodbury High School


**West Central**  
Barnesville Secondary  
Brandon Evansville High School  
Detroit Lakes Senior High  
Hawley Secondary  
Henning Secondary  
Kenney High School  
Minnewaska Secondary

Learn more at [www.ohe.state.mn.us/directadmissions](http://www.ohe.state.mn.us/directadmissions)

The Direct Admissions Participating High School and College Flyer is a printable resource that is available to participating colleges or high schools to provide to students and parents. The flyer lists the names of the participating postsecondary institutions and participating high schools during the 2023-24 school year.



**Figure C7. Direct Admissions Frequently Asked Questions for Students and Families**



## DIRECT ADMISSIONS

MINNESOTA

---

**Direct Admissions Frequently Asked Questions for Students and Families**

**Q: What is Direct Admissions?**

The Direct Admissions program is designed to promote college access by ensuring that all graduating high school students know that they qualify for admission to a variety of Minnesota colleges and universities. Direct Admissions is designed to make sure student know that the answer to the "will I get in?" question is going to be YES! This program is coordinated by the Minnesota Office of Higher Education and is a partnership between the Minnesota Department of Education, selected high schools, and participating colleges and universities. This program is funded by the State of Minnesota.

**Q: What is the goal of the Direct Admissions program?**

Direct Admissions starts with the belief that all students who have graduated from Minnesota high schools are "college material". The goal of the program is to make sure all graduating seniors know that they have multiple college options in Minnesota. We want to reduce anxiety around accessing higher education by making sure students don't have to worry about getting accepted once they have applied, because they have already met the admissions standards for the colleges identified on their letter.

**Q: What kinds of colleges and universities are participating in Direct Admissions?**

Minnesota has a variety of great of colleges and universities, both public and private, non-profit institutions, that are represented in the Direct Admissions program. Direct Admissions schools include:

- Community, technical, and tribal colleges that offer certificates and associates degrees (sometimes called "two-year degrees") in career fields as well as general education credits designed to prepare a student to transfer to a university to complete a bachelor's degree.
- Public universities that offer bachelor's degree (sometimes called "four-year degrees") options in a variety of academic programs and also offer options for on-campus housing for students who want a residential experience.
- Private, non-profit universities that offer certificates, associates degrees and bachelor's degrees in a variety of academic programs and generally also offer options for on-campus housing as well.

materials by each college's application deadline to secure a spot through the Direct Admissions program. You will receive your official acceptance letter after you have submitted your application and it has been processed according to the institution's timeline.

**Q: Can I apply to more than one college or university from my Direct Admissions list?**

Yes! Applying to more than one college or university can be a great idea, especially if you aren't totally sure where you want to go or what you want to study yet. Be sure to list all of the colleges you have applied for when you submit your FAFSA to ensure you get financial aid information to compare the schools you are interested in.

**Q: Are there application fees to apply to Direct Admissions colleges and universities?**

No, participating colleges and universities are waiving application fees for participating in the Direct Admissions pilot.

**Q: What if I already applied for some colleges or universities? Will this affect my application?**

No need to worry about any applications you may have already submitted! Your application will still be processed and there is no need to re-apply. Please note that, if you've already submitted an application fee, it will not be refunded.

**Q: What if I don't want to attend a school listed on my letter?**

If the schools you are most interested in are not on this list, no problem! You'll simply want to follow the standard application process for those schools. Please refer to those college's websites for application and admissions information. There is no need to respond to this email or to notify the schools listed on your letter that you are not interested.

**Q: When will I get my official admissions acceptance letter from the schools I've applied to?**

Once you have applied, your application will be processed according to the timeline indicated by each college or university's website. Please contact the school directly if you have questions about the status of your application.

---

Please note that both public and private universities happily accept transfer students from community and tribal colleges! All colleges and universities participating in the Direct Admissions pilot are [Minnesota State Grant](#) eligible for students who qualify.

**Q: How did I get selected for Direct Admissions?**

Your high school volunteered to participate in the Direct Admission program and you were included because a review of your academic record showed that you met the specific academic criteria for general admission to each school on your list and are on-track to graduate. Your academic information and contact information were shared through a data sharing agreement between your high school and the Minnesota Office of Higher Education.

**Q: Where can I go for more information about Direct Admissions?**

Check out the [Direct Admissions website](#) for more information!

**Q: Do I have to participate in Direct Admissions?**

Participating in Direct Admissions is optional but encouraged. If you choose not to apply to any of the schools on the list, you don't need to do anything further. Your information will not be shared with participating colleges and universities unless you choose to by selecting that college or university on your list. Applying to a Direct Admissions college or university doesn't obligate you to attend – you still get to choose the college that works best for you!

---

**Questions About Next Steps**

**Q: Do I still need to take a placement test or standardized test like ACT or SAT?**

While many colleges and universities participating in the Direct Admissions program do not require students to submit ACT or SAT scores, students should still consult the website of their top choice institutions to find out more about their current testing recommendations. You may be asked to submit ACT or SAT scores if required by the institution.

**Q: Do I still need to complete an admissions application?**

Yes! The Direct Admissions program lets you know what colleges and universities are ready to accept you, but you must complete the admission process to officially receive admission. Please check the college's website for application deadlines and a list of application materials required. You must supply all the requested application

2

---

**Questions about Choosing a College**

**Q: Do I have to attend one of the schools listed on my letter?**

Nope! Direct Admissions doesn't limit your choices and we encourage you to apply to all the schools you are interested in, regardless of their participation in the Direct Admissions pilot.

**Q: How can I learn more about a school I'm interested in?**

The best place to get more information about specific programs or to learn more about campus life is to visit each college's website or get started on Minnesota's [My Higher Ed](#) website. If you select the name of the school or schools you are interested in on your Direct Admissions letter, you'll also have the option to have your contact information shared with the college or university so they can send you more information as well. Campus visits are also a great way to learn more about a specific school!

**Q: I don't see the name of a college that I'm interested in on this letter? Does that mean I can't be admitted there?**

Some colleges and universities in Minnesota chose not to opt-in for the Direct Admission pilot, so you may not see a college you are interested in on the list. If there are other colleges you are interested in, you'll want to apply through their standard admissions processes.

---

**Questions about Paying for College**

**Q: How can I get help with paying for college? Do I still need to apply for financial aid?**

We strongly encourage all students to apply for financial aid through the [Free Application for Federal Student Aid](#) which is used to determine eligibility for both federal and state financial aid programs. The federal Pell Grant and the Minnesota State Grant provide grants to more than 120,000 students each year. Half of all students who apply receive a Pell Grant or Minnesota State Grant. Grants are based on the cost of the college chosen, family size, and income.

**Q: Can I get a scholarship or financial aid for attending a Direct Admission school on my list?**

There is not a scholarship connected with your Direct Admissions offer, but we encourage all students to complete their FAFSA and college applications as soon as possible to determine all financial aid they may be

4

*The Frequently Asked Questions for Students and Families document was sent to participating high school students and their parents/guardians, along with the Tennessean warning notice, to inform them about the Direct Admissions program.*

# Appendix D. Direct Admissions Student Letters Tiers 1 through 6

## Direct Admissions Student Letter Text

Dear [Name],

Congratulations! Based on a review of your high school transcript, you are on track to graduate in 2023-2024 and are eligible to participate in the Minnesota Direct Admissions\* program! As you begin planning for your future, we want to make sure you know that **you are college material** and have met the admissions criteria for many colleges and universities in Minnesota. The next step is to decide which colleges and universities from the list below you want to admit you via Direct Admissions.

The Direct Admissions program has taken the worry out of knowing where you stand. You can choose to apply to one or more of the schools listed on this letter and know that you'll be granted admissions. You can also look into the other great higher education options in Minnesota if the college or university you are most interested in doesn't appear on this list (check out [myhighered.mn.gov](http://myhighered.mn.gov) to learn more).

You have a couple of next steps:

1. Check your high school email to review your personalized list of colleges and universities. The next step is to confirm your interest in one or more of the colleges and universities to which you have been directly admitted. Select "yes," to be directly admitted for Fall 2024. After you confirm your choices, the colleges or universities will follow up with you with more information. Remember to hit the "submit" button at the end of the form!
2. Review your institution's application deadlines and submit the FREE admissions applications. If you are ready to apply, check out the websites for your potential institutions to make sure you have all your application materials prepared (some schools may require an essay, test scores, or other materials). Please note: Although your application fees will be waived, you must still meet the application deadlines, even if you are applying through Direct Admissions.
3. Get help paying for college! You can apply for financial aid by completing your Free Application for Federal Student Aid (FAFSA). Remember to fill out the FAFSA when it opens in December 2023 or check out our FAQ for more information!

\*Please see website: [www.oh.state.mn.us/directadmissions](http://www.oh.state.mn.us/directadmissions) and program FAQ for more information. Some restrictions may apply or additional information may be required for admission into specific majors or programs.

Based on your academic record, you qualify for Direct Admissions at the following colleges and universities:

[List of tier-specific colleges and universities]

Your future is bright and on behalf of the Minnesota Office of Higher Education, we congratulate you for being on the right track for college in the fall of 2024!

Sincerely,

Dennis W. Olson, Commissioner, Office of Higher Education

School Official, Title

## Tier 1 Letter

Based on your academic record, you qualify for Direct Admissions at the following colleges and universities:

### Public and Tribal Two-Year Colleges

- ✓ Alexandria Community and Technical College
- ✓ Anoka Technical College
- ✓ Anoka-Ramsey Community College
- ✓ Central Lakes College
- ✓ Century College
- ✓ Dakota County Community and Technical College
- ✓ Fond Du Lac Tribal and Community College
- ✓ Hennepin Technical College
- ✓ Inver Hills Community College
- ✓ Lake Superior College
- ✓ Minneapolis College
- ✓ Minnesota North College
- ✓ Minnesota State College Southeast
- ✓ Minnesota State Community and Technical College
- ✓ Minnesota West Community and Technical College
- ✓ Normandale College
- ✓ North Hennepin Community College
- ✓ Northland Community and Technical College
- ✓ Northwest Technical College
- ✓ Pine Technical and Community College
- ✓ Red Lake Nation College
- ✓ Ridgewater College
- ✓ Riverland Community College
- ✓ Rochester Community and Technical College
- ✓ St. Cloud Technical and Community College
- ✓ St. Paul College
- ✓ South Central College
- ✓ White Earth Tribal and Community College

### Private Colleges and Universities

- ✓ Northwestern Health Sciences University

## Tier 2 Letter

Based on your academic record, you qualify for Direct Admissions at the following colleges and universities:

### Public and Tribal Two-Year Colleges

- ✓ Alexandria Community and Technical College
- ✓ Anoka Technical College
- ✓ Anoka-Ramsey Community College
- ✓ Central Lakes College
- ✓ Century College
- ✓ Dakota County Community and Technical College
- ✓ Fond Du Lac Tribal and Community College
- ✓ Hennepin Technical College
- ✓ Inver Hills Community College
- ✓ Lake Superior College
- ✓ Minneapolis College
- ✓ Minnesota North College
- ✓ Minnesota State College Southeast
- ✓ Minnesota State Community and Technical College
- ✓ Minnesota West Community and Technical College
- ✓ Normandale College
- ✓ North Hennepin Community College
- ✓ Northland Community and Technical College
- ✓ Northwest Technical College
- ✓ Pine Technical and Community College
- ✓ Red Lake Nation College
- ✓ Ridgewater College
- ✓ Riverland Community College
- ✓ Rochester Community and Technical College
- ✓ St. Cloud Technical and Community College
- ✓ St. Paul College
- ✓ South Central College
- ✓ White Earth Tribal and Community College

### Public Four-Year Universities

- ✓ St. Cloud State University

### Private Colleges and Universities

- ✓ Bethel University Online
- ✓ The College of St. Scholastica

- ✓ Dunwoody College of Technology
- ✓ Northwestern Health Sciences University

## Tier 3 Letter

Based on your academic record, you qualify for Direct Admissions at the following colleges and universities:

### Public and Tribal Two-Year Colleges

- ✓ Alexandria Community and Technical College
- ✓ Anoka Technical College
- ✓ Anoka-Ramsey Community College
- ✓ Central Lakes College
- ✓ Century College
- ✓ Dakota County Community and Technical College
- ✓ Fond Du Lac Tribal and Community College
- ✓ Hennepin Technical College
- ✓ Inver Hills Community College
- ✓ Lake Superior College
- ✓ Minneapolis College
- ✓ Minnesota North College
- ✓ Minnesota State College Southeast
- ✓ Minnesota State Community and Technical College
- ✓ Minnesota West Community and Technical College
- ✓ Normandale College
- ✓ North Hennepin Community College
- ✓ Northland Community and Technical College
- ✓ Northwest Technical College
- ✓ Pine Technical and Community College
- ✓ Red Lake Nation College
- ✓ Ridgewater College
- ✓ Riverland Community College
- ✓ Rochester Community and Technical College
- ✓ St. Cloud Technical and Community College
- ✓ St. Paul College
- ✓ South Central College
- ✓ White Earth Tribal and Community College

### Public Four-Year Universities

- ✓ Bemidji State University
- ✓ Metropolitan State University
- ✓ Southwest Minnesota State University
- ✓ St. Cloud State University

### Private Colleges and Universities

- ✓ Bethel University Online
- ✓ The College of St. Scholastica
- ✓ Concordia University St. Paul
- ✓ Dunwoody College of Technology
- ✓ Northwestern Health Sciences University

## Tier 4 Letter

Based on your academic record, you qualify for Direct Admissions at the following colleges and universities:

### Public and Tribal Two-Year Colleges

- ✓ Alexandria Community and Technical College
- ✓ Anoka Technical College
- ✓ Anoka-Ramsey Community College
- ✓ Central Lakes College
- ✓ Century College
- ✓ Dakota County Community and Technical College
- ✓ Fond Du Lac Tribal and Community College
- ✓ Hennepin Technical College
- ✓ Inver Hills Community College
- ✓ Lake Superior College
- ✓ Minneapolis College
- ✓ Minnesota North College
- ✓ Minnesota State College Southeast
- ✓ Minnesota State Community and Technical College
- ✓ Minnesota West Community and Technical College
- ✓ Normandale College
- ✓ North Hennepin Community College
- ✓ Northland Community and Technical College
- ✓ Northwest Technical College
- ✓ Pine Technical and Community College
- ✓ Red Lake Nation College
- ✓ Ridgewater College
- ✓ Riverland Community College
- ✓ Rochester Community and Technical College

- ✓ St. Cloud Technical and Community College
- ✓ St. Paul College

- ✓ South Central College
- ✓ White Earth Tribal and Community College

#### Public Four-Year Universities

- ✓ Bemidji State University
- ✓ Metropolitan State University
- ✓ Minnesota State University Moorhead
- ✓ Southwest Minnesota State University

- ✓ St. Cloud State University
- ✓ University of Minnesota, Crookston
- ✓ Winona State University

#### Private Colleges and Universities

- ✓ Bethany Lutheran College
- ✓ Bethel University Online
- ✓ The College of St. Scholastica
- ✓ Concordia University St. Paul

- ✓ Dunwoody College of Technology
- ✓ Hamline University
- ✓ Northwestern Health Sciences University
- ✓ Saint Mary's University of Minnesota

## Tier 5 Letter

Based on your academic record, you qualify for Direct Admissions at the following colleges and universities:

#### Public and Tribal Two-Year Colleges

- ✓ Alexandria Community and Technical College
- ✓ Anoka Technical College
- ✓ Anoka-Ramsey Community College
- ✓ Central Lakes College
- ✓ Century College
- ✓ Dakota County Community and Technical College
- ✓ Fond Du Lac Tribal and Community College
- ✓ Hennepin Technical College
- ✓ Inver Hills Community College
- ✓ Lake Superior College
- ✓ Minneapolis College
- ✓ Minnesota North College
- ✓ Minnesota State College Southeast
- ✓ Minnesota State Community and Technical College

- ✓ Minnesota West Community and Technical College
- ✓ Normandale College
- ✓ North Hennepin Community College
- ✓ Northland Community and Technical College
- ✓ Northwest Technical College
- ✓ Pine Technical and Community College
- ✓ Red Lake Nation College
- ✓ Ridgewater College
- ✓ Riverland Community College
- ✓ Rochester Community and Technical College
- ✓ St. Cloud Technical and Community College
- ✓ St. Paul College
- ✓ South Central College
- ✓ White Earth Tribal and Community College

#### Public Four-Year Universities

- ✓ Bemidji State University
- ✓ Metropolitan State University
- ✓ Minnesota State University Mankato
- ✓ Minnesota State University Moorhead
- ✓ Southwest Minnesota State University

- ✓ St. Cloud State University
- ✓ University of Minnesota, Crookston
- ✓ University of Minnesota, Duluth
- ✓ University of Minnesota, Morris
- ✓ Winona State University

#### Private Colleges and Universities

- ✓ Augsburg University
- ✓ Bethany Lutheran College
- ✓ Bethel University
- ✓ Bethel University Online
- ✓ College of Saint Benedict
- ✓ The College of St. Scholastica
- ✓ Concordia University St. Paul

- ✓ Concordia College
- ✓ Dunwoody College of Technology
- ✓ Hamline University
- ✓ Minneapolis College of Art and Design
- ✓ Northwestern Health Sciences University
- ✓ Saint John's University
- ✓ Saint Mary's University of Minnesota

- ✓ St. Catherine University

## Tier 6 Letter

Based on your academic record, you qualify for Direct Admissions at the following colleges and universities:

### Public and Tribal Two-Year Colleges

- ✓ Alexandria Community and Technical College
- ✓ Anoka Technical College
- ✓ Anoka-Ramsey Community College
- ✓ Central Lakes College
- ✓ Century College
- ✓ Dakota County Community and Technical College
- ✓ Fond Du Lac Tribal and Community College
- ✓ Hennepin Technical College
- ✓ Inver Hills Community College
- ✓ Lake Superior College
- ✓ Minneapolis College
- ✓ Minnesota North College
- ✓ Minnesota State College Southeast
- ✓ Minnesota State Community and Technical College
- ✓ Minnesota West Community and Technical College
- ✓ Normandale College
- ✓ North Hennepin Community College
- ✓ Northland Community and Technical College
- ✓ Northwest Technical College
- ✓ Pine Technical and Community College
- ✓ Red Lake Nation College
- ✓ Ridgewater College
- ✓ Riverland Community College
- ✓ Rochester Community and Technical College
- ✓ St. Cloud Technical and Community College
- ✓ St. Paul College
- ✓ South Central College
- ✓ White Earth Tribal and Community College

### Public Four-Year Universities

- ✓ Bemidji State University
- ✓ Metropolitan State University
- ✓ Minnesota State University Mankato
- ✓ Minnesota State University Moorhead
- ✓ Southwest Minnesota State University
- ✓ St. Cloud State University
- ✓ University of Minnesota, Crookston
- ✓ University of Minnesota, Duluth
- ✓ University of Minnesota, Morris
- ✓ University of Minnesota, Rochester
- ✓ Winona State University

### Private Colleges and Universities

- ✓ Augsburg University
- ✓ Bethany Lutheran College
- ✓ Bethel University
- ✓ Bethel University Online
- ✓ College of Saint Benedict
- ✓ The College of St. Scholastica
- ✓ Concordia University St. Paul
- ✓ Concordia College
- ✓ Dunwoody College of Technology
- ✓ Gustavus Adolphus College
- ✓ Hamline University
- ✓ Minneapolis College of Art and Design
- ✓ Northwestern Health Sciences University
- ✓ Saint John's University
- ✓ Saint Mary's University of Minnesota
- ✓ St. Catherine University
- ✓ University of St. Thomas

## Appendix E. Legislation for Direct Admissions Minnesota

---

### 136A.84 DIRECT ADMISSIONS PROGRAM.

Subdivision 1. **Authorization.** The commissioner shall administer the direct admissions program in consultation with stakeholders, including Minnesota State Colleges and Universities, the University of Minnesota, the Student Advisory Council under section 136A.031, the Minnesota Department of Education, the Minnesota Association of Secondary School Principals, and the Minnesota School Board Association, to automatically offer conditional admission into an eligible public or nonprofit institution as defined under section 136A.103, paragraph (a), located in Minnesota, to Minnesota high school seniors based on a student's high school grade point average, high school and college transcript information, standardized tests, statewide assessments, and other measures as determined by stakeholders.

Subd. 2. **Implementation.** The program shall establish and, to the extent feasible, implement a process for leveraging existing kindergarten through grade 12 and higher education student information systems to automate the admissions process for students. The program must specifically evaluate the impact this process has on outcomes for students with lower levels of college knowledge, low-income students, and students from populations underserved in higher education. The office shall attempt to achieve statewide representation and may prioritize program participants to include high schools with a significant number of students of color, low-income students, or both.

Subd. 3. **Information.** The commissioner shall provide information about the Minnesota state grant program and the North Star Promise and encourage students to determine their eligibility for financial aid based on FAFSA and state financial aid application completion.

Subd. 4. **Report.** Annually, by February 1, the Office of Higher Education shall report to the legislative committees with jurisdiction over kindergarten through grade 12 education finance and policy and higher education on activities occurring under this section. The report must include but is not limited to information about implementation, recommendations, and outcomes.

**History:** 2023 c 41 art 2 s 25



OFFICE OF  
HIGHER EDUCATION

2024