



GWDB/MN P-20 Partnership Education Committee

Katie McClelland | Governor's Workforce Development Board Executive Director



IWA: Building Enterprise Workforce Development Alignment

Overarching Aim of Using the IWA as the Space for Interagency Alignment: Enable thoughtful, strategic, aligned, and proactive interagency decision-making and collaboration, and hold ourselves accountable for reaching a 4.4% vacancy rate overall and in the Drive for Five sectors.

- **Aim 1:** Ensure Enterprise-wide alignment and defined agency ownership of workforce efforts across the Drive for 5 Sectors.
- **Aim 2:** Define metrics and measurable goals to track progress on stated outcomes and timelines.
- **Aim 3:** Ensure effective internal and external communication about statewide talent attraction and retention strategies.

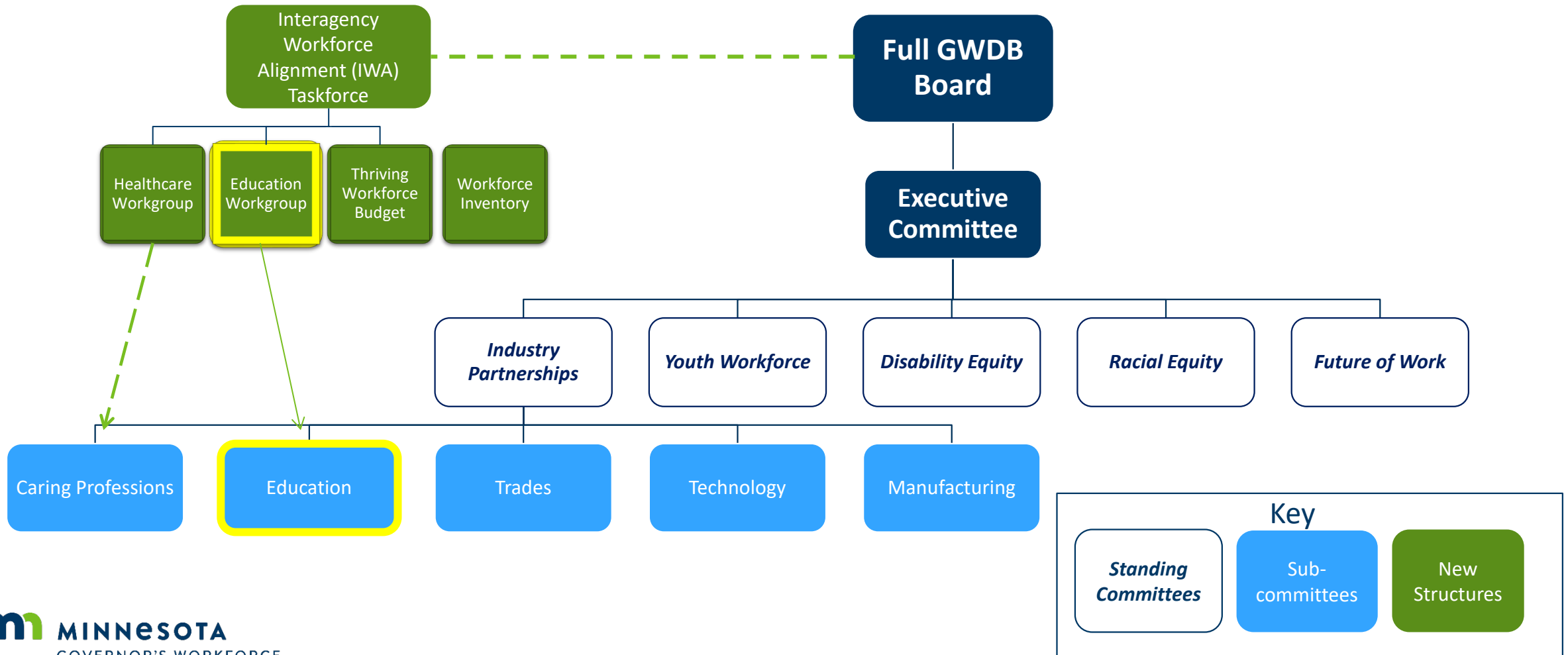
Areas of Focus for Education Workgroup

The charge of the GWDB-MNP20 Partnership on Educator Workforce is to:

1. Identify and recommend strategies for strengthening alignment between educator workforce efforts across the state
2. Identify and recommend metrics to be used in determining successful emerging practices and programs to accelerate and scale
3. Identify and recommend strategies to increase communication:
 - A. To students and families about educator workforce initiatives, funding, and programs
 - B. To and between relevant organizations about educator workforce initiatives, funding, and programs

Recommendations of this Committee will be forwarded for further action to the IWA Taskforce, full Governor's Workforce Development Board and to the Minnesota P-20 Education Partnership.

Governor's Workforce Development Board Partnership with IWA & MN P-20 Education Partnership



DRAFT: Workgroup Membership Responsibilities

Active Participation:

- Attend all meetings and actively engage in discussions.
- Review meeting materials in advance and come prepared to contribute.
- Provide informed feedback and recommendations based on expertise and experience.

Collaboration and Information Sharing:

- Foster cross-agency and cross-sector collaboration.
- Share relevant data, resources and best practices.
- Identify areas for partnership and integration.

Issue Identification and Problem Solving:

- Help define challenges and barriers to potential solutions and current issues.
- Offer potential solutions and strategies.
- Contribute to the development of recommendations for policy or programmatic improvements.

Accountability and Follow-Through:

- Complete action items or tasks assigned by the Chair, or Co-Chair.
- Provide progress updates on assigned responsibilities when requested.
- Support implementation efforts for agreed-upon initiatives, where applicable.

Communication and Advocacy:

- Serve as a conduit between the workgroup and their respective organizations or industries.
- Advocate for initiatives within their professional networks, where appropriate.

Questions?

Katie McClelland

Governor's Workforce Development Board Executive Director

Katie.mcclelland@state.mn.us

Patti Balacek

Workforce Development System Coordinator

Patti.Balacek@state.mn.us